



Appendix



Link directory	A/2
Conditions of sale and delivery	A/8
Article number index	A/10
Index	A/17

Link directory

Catalog LV 10

General information

Information on low-voltage power distribution and electrical installation technology	www.siemens.com/lowvoltage
Tender specifications	www.siemens.com/lowvoltage/tenderspecifications
Conversion tool	www.siemens.com/conversion-tool
Image database	www.siemens.com/lowvoltage/picturedb
CAX download manager	www.siemens.com/cax
Newsletter system	www.siemens.com/lowvoltage/newsletter
Siemens YouTube channel	www.youtube.com/Siemens
Catalog LV 10	www.siemens.com/lv10
Catalog LV 13	www.siemens.com/lv13
Catalog LV 18	www.siemens.com/lv18
Brochures/catalogs	www.siemens.com/lowvoltage/catalogs
Operating instructions/manuals	www.siemens.com/lowvoltage/manuals
Siemens Industry Online Support (SIOS)	www.siemens.com/lowvoltage/product-support
Siemens Industry Online Support app	www.siemens.com/support-app
My Documentation Manager (MDM)	www.siemens.com/lowvoltage/mdm
Configurators	www.siemens.com/lowvoltage/configurators
Siemens Industry Mall – product catalog and online ordering system	www.siemens.com/lowvoltage/mall
Direct forwarding to the Industry Mall	www.siemens.com/product?Article No.
Training	www.siemens.com/sitrain-lowvoltage
Local contacts	www.siemens.com/lowvoltage/contact www.siemens.com/lowvoltage/components/contact www.siemens.com/lowvoltage/systems/contact www.siemens.com/lowvoltage/software/contact
Technical Support	www.siemens.com/support-request
Information on services	www.siemens.com/service-catalog
Manual for the generation, transmission and distribution of electrical energy	www.siemens.com/power-engineering-guide
Control panels for the North American market	www.siemens.com/northamerican-standards
Control panel building	www.siemens.com/controlpanel
Energy savings and amortization	www.automation.siemens.com/sinasave
SIMATIC Energy Suite	www.siemens.com/energysuite
SITOP power supplies	www.siemens.com/sitop
Power distribution with Totally Integrated Power	www.siemens.com/tip

Information + ordering

Technical overviews	
Air circuit breakers	www.siemens.com/lowvoltage/produkt-support (109781188)
Molded case circuit breakers	www.siemens.com/lowvoltage/product-support (109767421)
Miniature circuit breakers	www.siemens.com/lowvoltage/product-support (109769082)
Residual current protective devices/arc fault detection devices	www.siemens.com/lowvoltage/product-support (109769082)
Switching devices	www.siemens.com/lowvoltage/product-support (109769083)
Overvoltage protection devices	www.siemens.com/lowvoltage/product-support (109769084)
Fuse systems	www.siemens.com/lowvoltage/product-support (109769085)
Switch disconnectors	www.siemens.com/lowvoltage/product-support (109764946)
Transfer switching equipment and load transfer switches	www.siemens.com/lowvoltage/product-support (109764946)
Measuring devices, power monitoring and digitalization solutions	www.siemens.com/lowvoltage/product-support (109764480)
Monitoring devices	www.siemens.com/lowvoltage/product-support (109769086)
Transformers, power supply units and socket outlets	www.siemens.com/lowvoltage/product-support (109764946)
Busbar systems	www.siemens.com/lowvoltage/product-support (109769087)

Technical overviews	
Terminal blocks	www.siemens.com/lowvoltage/product-support (109769088)
Power distribution boards, motor control centers and distribution boards	www.siemens.com/lowvoltage/product-support (109769089)
Busbar trunking systems	www.siemens.com/lowvoltage/product-support (109769090)
System cubicles, system lighting and system air-conditioning	www.siemens.com/lowvoltage/product-support (109769091)
All the important things at a glance	
Air circuit breakers	www.siemens.com/3WA www.siemens.com/3WL
Molded case circuit breakers	www.siemens.com/3VA
Miniature circuit breakers	www.siemens.com/mcb www.siemens.com/protection-concept
Residual current protective devices/arc fault detection devices	www.siemens.com/rccb www.siemens.com/protection-concept
Switching devices	www.siemens.com/switching-devices
Overvoltage protection devices	www.siemens.com/overvoltage-protection
Fuse systems	www.siemens.com/fuses
Switch disconnectors	www.siemens.com/switching-devices
Transfer switching equipment and load transfer switches	www.siemens.com/switching-devices sie.ag/2XBonli
Measuring devices, power monitoring and digitalization solutions	www.siemens.com/powermonitoring www.siemens.com/sentron-digital
Monitoring devices	www.siemens.com/lowvoltage
Transformers, power supply units and socket outlets	www.siemens.com/lowvoltage
Busbar systems	www.siemens.com/lowvoltage
Terminal blocks	www.siemens.com/distribution-components
Power distribution boards, motor control centers and distribution boards	www.siemens.com/sivacon-S8 www.siemens.com/distributionsystems
Busbar trunking systems	www.siemens.com/sivacon-8PS
System cubicles, system lighting and system air-conditioning	www.siemens.com/sivacon-8mf
Your product in detail	
Brochure – 3WA air circuit breakers	www.siemens.com/lowvoltage/product-support (109800077)
Brochure – Energy and data successfully put on track	www.siemens.com/lowvoltage/product-support (109747761)
Brochure – SENTRON portfolio for power monitoring	www.siemens.com/lowvoltage/product-support (109744725)
Brochure – SENTRON powermanager – update and benefit	www.siemens.com/lowvoltage/product-support (109805178)
Brochure – SIVACON 8MF1 system cubicles – As versatile as your requirements	www.siemens.com/lowvoltage/product-support (109744677)
Brochure – SIVACON S8 ^{plus} – The plus for your business: Intelligent. Flexible. Safe.	www.siemens.com/lowvoltage/product-support (109747937)
Catalog LV 70 · 2019 – SIVACON 8PS busbar trunking systems – BD01, BD2 up to 1250 A	www.siemens.com/lowvoltage/product-support (109744546)
Quick Selection Guide – 3WA air circuit breakers	www.siemens.com/lowvoltage/product-support (109781967)
Quick Selection Guide – 3WL air circuit breakers	www.siemens.com/lowvoltage/product-support (109751638)
Quick Selection Guide – 3VA molded case circuit breaker	www.siemens.com/lowvoltage/product-support (109757591)
Technical Basic Information – 3VA molded case circuit breakers	www.siemens.com/lowvoltage/product-support (109766672)
Technical Basic Information – 3WL air circuit breakers	www.siemens.com/lowvoltage/product-support (109767789)
Technical Basic Information – ALPHA distribution systems	www.siemens.com/lowvoltage/product-support (109778911)
Technical Basic Information – SENTRON protection concept	www.siemens.com/lowvoltage/product-support (109767456)
Technical Basic Information – SIVACON 8MF1 system cubicle	www.siemens.com/lowvoltage/product-support (109767386)
Technical Basic Information – SIVACON S4 power distribution boards and ALPHA UNIVERSAL distribution boards	www.siemens.com/lowvoltage/product-support (109767882)
Technical Basic Information – Switch disconnectors and transfer switching equipment	www.siemens.com/lowvoltage/product-support (109763354)
Technology Primer – Fuse systems	www.siemens.com/lowvoltage/product-support (109482303)
Technology Primer – Miniature circuit breakers	www.siemens.com/lowvoltage/product-support (109482304)
Technology Primer – Overvoltage protection devices	www.siemens.com/lowvoltage/product-support (109756965)
Technology Primer – Residual current protective devices	www.siemens.com/lowvoltage/product-support (109482301)

Link directory

Catalog LV 10

Siemens YouTube channel

3WA air circuit breaker – Teaserfilm	bit.ly/3p14AOZ
3WA air circuit breaker – Highlightfilm	bit.ly/2Y0iWD2
3WL air circuit breakers (general)	bit.ly/2ZH1rXH
3VA molded case circuit breakers (general)	bit.ly/2xNxIFA
Miniature circuit breakers (general)	bit.ly/2kJP2Dq
Residual current protective devices (general)	bit.ly/2YuWkNc
Siemens fuse systems	bit.ly/2kWaepz
Power monitoring (general)	bit.ly/2lZ9QqC
Siemens ALPHA FIX terminal blocks – 8WH2 terminal with spring-loaded-connection	bit.ly/2kKVz0D
SIVACON power distribution (general)	bit.ly/2m4oSLI
Siemens SIVACON S4 power distribution boards up to 4000 A	bit.ly/2krni6h

Everything you need for your order

Air circuit breakers	sie.ag/2lXiZjB
Molded case circuit breakers	sie.ag/2mmLcAk
SENTRON miniature circuit breakers	sie.ag/2kTFXl5
SENTRON residual current protective devices	sie.ag/2m55Y7j
Switching devices	sie.ag/2m4eG5M
SENTRON overvoltage protection devices	sie.ag/2kTfyTV
Fuse systems	sie.ag/2kW3pnU
Switch disconnectors	sie.ag/36HDIzP
Transfer switching equipment and load transfer switches	sie.ag/2mmMw6g
Measuring devices and power monitoring	sie.ag/2kTH9Lz
Digitalization solutions	sie.ag/2olliNi
Library for SIMATIC	sie.ag/2kpbwcs
SENTRON powermanager/SENTRON powerconfig	sie.ag/2kTJjuF
Monitoring devices	sie.ag/2m3no4A
Transformers, power supply units and socket outlets	sie.ag/2mmSHHu
Busbar systems	sie.ag/2lXoUFI
Terminal blocks	sie.ag/2kW8ZXo
SIVACON S4 (NF)	sie.ag/2JUQwE4
Distribution boards	sie.ag/2kURLd8
SIMARIS planning tools	sie.ag/2m3oFbS
SIVACON 8PS	sie.ag/2lXpCT1 www.siemens.com/sivacon8PS-contact
System cubicles	sie.ag/339cQB9
SIVACON S8	www.siemens.com/sivacon-partnerfinder www.siemens.com/sivaconS8-contact

Order support

3KD switch disconnectors – End-to-end safety for user and systems	www.siemens.com/lowvoltage/catalogs (109750228)
3LD2 main control and EMERGENCY-STOP-switching equipment – End-to-end safety for user and systems	www.siemens.com/lowvoltage/catalogs (109755626)
3NP1 fuse switch disconnectors – End-to-end safety for user and systems	www.siemens.com/lowvoltage/catalogs (109755624)
3KF switch disconnectors with fuses – End-to-end safety for user and systems	www.siemens.com/lowvoltage/catalogs (109750229)
3NJ63 switch disconnectors with fuses – End-to-end safety for user and systems	www.siemens.com/lowvoltage/catalogs (109755619)
3KC automatic transfer switching equipment (ATSE) – End-to-end safety for user and systems	www.siemens.com/lowvoltage/catalogs (109755620)
3KC remotely operated transfer switching equipment (RTSE) – End-to-end safety for user and systems	www.siemens.com/lowvoltage/catalogs (109755627)

Order support	
3KC manual transfer switching equipment (MTSE) – End-to-end safety for user and systems	www.siemens.com/lowvoltage/catalogs (109750227)
SIVACON 8PS – BD01 and BD2	www.siemens.com/LV70
3WA air circuit breakers – Made for makers. Simply reliable.	www.siemens.com/lowvoltage/catalogs (109800074)
3VA molded case circuit breakers – One system. Global use.	www.siemens.com/lowvoltage/catalogs (109765994)
Configurators	
3WA air circuit breakers	www.siemens.com/lowvoltage/3wa-configurator
3WL air circuit breakers	www.siemens.com/lowvoltage/3wl-configurator
3WL10 air circuit breakers	www.siemens.com/lowvoltage/3wl10-configurator
3VA molded case circuit breakers	www.siemens.com/lowvoltage/3va-configurator
3VA27 molded case circuit breakers	www.siemens.com/lowvoltage/3va27-configurator
SITOR semiconductor fuses	www.siemens.com/lowvoltage/sitor-configurator
3NJ63 switch disconnectors	www.siemens.com/lowvoltage/3nj63-configurator
3LD switch disconnectors	www.siemens.com/lowvoltage/3ld-configurator
3KD switch disconnectors	www.siemens.com/lowvoltage/3kd-configurator
3KF switch disconnectors with fuses	www.siemens.com/lowvoltage/3kf-configurator
3NP1 fuse switch disconnectors	www.siemens.com/lowvoltage/3np1-configurator
SIVACON 8MF1 system cubicle	www.siemens.com/lowvoltage/8mf1-configurator
7KM PAC and 7KT PAC measuring device	www.siemens.com/lowvoltage/pac-configurator

Commissioning + operation

Tools/software	
SIMARIS configuration	www.siemens.com/simarisconfig
SENTRON powerconfig	www.siemens.com/powerconfig
SIMARIS planning tools	www.siemens.com/simaris
SIMARIS therm	www.siemens.com/simaristherm
Manuals	
Application Manual – SIVACON S4 Power distribution boards up to 6300 A	www.siemens.com/lowvoltage/manuals (25909512)
Communication Manual – 3VA molded case circuit breakers with IEC and UL certification	www.siemens.com/lowvoltage/manuals (98746267)
Communication Manual – 3WL air circuit breakers via COM35 – PROFINET IO, Modbus TCP	www.siemens.com/lowvoltage/manuals (109757987)
Communication Manual – 3WL10 air circuit breakers & 3VA27 molded case circuit breakers	www.siemens.com/lowvoltage/manuals (109760220)
Communication Manual – SENTRON PAC5100/5200 7KM5212/5412	www.siemens.com/lowvoltage/manuals (109477870)
Configuration Manual – 3VA selectivity	www.siemens.com/lowvoltage/manuals (109743975)
Configuration Manual – 3WL1 air circuit breakers	www.siemens.com/lowvoltage/manuals (35681108)
Configuration Manual – 8US busbar systems	www.siemens.com/lowvoltage/manuals (109769746)
Configuration Manual – Fuse systems	www.siemens.com/lowvoltage/manuals (45314810)
Configuration Manual – Low-voltage protection devices selectivity tables	www.siemens.com/lowvoltage/manuals (109748621)
Configuration Manual – Measuring devices and power monitoring	www.siemens.com/lowvoltage/manuals (45315973)
Configuration Manual – Miniature circuit breakers	www.siemens.com/lowvoltage/manuals (45302792)
Configuration Manual – Monitoring devices	www.siemens.com/lowvoltage/manuals (45316099)
Configuration Manual – Overvoltage protection devices	www.siemens.com/lowvoltage/manuals (45315289)
Configuration Manual – Residual protective devices/ arc fault detection devices	www.siemens.com/lowvoltage/manuals (45303255)
Configuration Manual – Switching devices	www.siemens.com/lowvoltage/manuals (45315361)
Configuration Manual – Switch disconnectors	www.siemens.com/lowvoltage/manuals (109769744)

Link directory

Catalog LV 10

Manuals

Configuration Manual – Transfer switching equipment and load transfer switches	www.siemens.com/lowvoltage/manuals (109769745)
Configuration Manual – Transformers, power supply units and socket outlets	www.siemens.com/lowvoltage/manuals (45315886)
Equipment Manual – 3KD switch disconnecter	www.siemens.com/lowvoltage/manuals (109758120)
Equipment Manual – 3KC3 and 3KC6 transfer switching equipment	www.siemens.com/lowvoltage/manuals (109754954)
Equipment Manual – 3KC0 Manual transfer switching equipment	www.siemens.com/lowvoltage/manuals (109763232)
Equipment Manual – 3KC4 and 3KC8 transfer switching equipment	www.siemens.com/lowvoltage/manuals (109738725)
Equipment Manual – 3KC ATC3100 transfer control device	www.siemens.com/lowvoltage/manuals (100341671)
Equipment Manual – 3KC ATC6300 transfer control device	www.siemens.com/lowvoltage/manuals (109755149)
Equipment Manual – 3VA27 molded case circuit breakers & 3WL10 air circuit breakers	www.siemens.com/lowvoltage/manuals (109753821)
Equipment Manual – 3VA molded case circuit breakers with IEC certificate	www.siemens.com/lowvoltage/manuals (90318775)
Equipment Manual – 3WA air circuit breakers	www.siemens.com/lowvoltage/manuals (109763061)
Equipment Manual – 3KC ATC6500 transfer control device	www.siemens.com/lowvoltage/manuals (109758018)
Equipment Manual – 7KT PAC1600 energy meter	www.siemens.com/lowvoltage/manuals (109759827)
Equipment Manual – 7KT PAC1600 multimeter	www.siemens.com/lowvoltage/manuals (109760293)
Equipment Manual – 7KM PAC2200 power monitoring device	www.siemens.com/lowvoltage/manuals (109746835)
Equipment Manual – 7KM PAC3200T power monitoring device	www.siemens.com/lowvoltage/manuals (109746833)
Equipment Manual – SENTRON PAC5100/5200 7KM5212/5412	www.siemens.com/lowvoltage/manuals (109477872)
Equipment Manual – 7KM PAC3120 and 7KM PAC3220	www.siemens.com/lowvoltage/manuals (109767307)
Equipment Manual – 7KN POWERCENTER 3000	www.siemens.com/lowvoltage/manuals (109763838)
Equipment Manual – 7KM PAC2200CLP power monitoring device	www.siemens.com/lowvoltage/manuals (109783220)
Installation Manual – SENTRON circuit protection devices with communication and measuring function	www.siemens.com/lowvoltage/manuals (109791805)
Operating Manual – Software SIMARIS therm planning tool	www.siemens.com/lowvoltage/manuals (109744553)
Planning Manual – Planning with SIVACON 8PS	www.siemens.com/lowvoltage/manuals (109478425)
Planning Manual – SIVACON S8 – Technical planning information	www.siemens.com/lowvoltage/manuals (107113936)
Quick Installation Guide – 7KN POWERCENTER 3000	www.siemens.com/lowvoltage/manuals (109766001)
SEM3™ – Embedded Micro Metering Module™	www.siemens.com/lowvoltage/manuals (109748928)
System Manual – 3WA air circuit breaker communication	www.siemens.com/lowvoltage/manuals (109792368)
System Manual – 3WL/3VL circuit breakers with communication capability – Modbus	www.siemens.com/lowvoltage/manuals (39850157)
System Manual – 3WL/3VL circuit breakers with communication capability – PROFIBUS	www.siemens.com/lowvoltage/manuals (12560390)
System Manual – SENTRON 3NJ62 in-line plug-in switch disconnectors with fuses	www.siemens.com/lowvoltage/manuals (31753460)
System Manual – SENTRON 3NP1 fuse switch disconnecter	www.siemens.com/lowvoltage/manuals (33515690)
System Manual – 7KT multichannel current measuring system	www.siemens.com/lowvoltage/manuals (109483442)
System Manual – SENTRON PAC4200 Power monitoring device	www.siemens.com/lowvoltage/manuals (34261595)
System Manual – SENTRON circuit protection devices with communication and measuring function	www.siemens.com/lowvoltage/manuals (109791806)

Face-to-face or online training

Video tutorial on the 3WL air circuit breaker	www.lowvoltage.siemens.com/wcms/3wl-tutorial
Protection systems in low-voltage power distribution	www.siemens.com/sittrain-lowvoltage (WT-LVAPS)
3WL10 air circuit breaker, size 0	www.siemens.com/sittrain-lowvoltage (WT-LVA3WL0)
3WL air circuit breakers, sizes 1-3	www.siemens.com/sittrain-lowvoltage (WT-LVA3WL)
3VA molded case circuit breaker	www.siemens.com/sittrain-lowvoltage (WT-LVA3VA)
Protection concept	www.siemens.com/sittrain-lowvoltage (WT-LVBPC)

Face-to-face or online training	
SSM6/5SV6 arc fault detection devices	www.siemens.com/sitrain-lowvoltage (WT-LVBAFDD)
Power Monitoring with SENTRON	www.siemens.com/sitrain-lowvoltage (WT-LVAEM)
SIMARIS configuration	www.siemens.com/sitrain-lowvoltage (WT-LVASIMC)
Certification: Maintenance and operation of 3WL and 3WA circuit breakers	www.siemens.com/sitrain-lowvoltage (LV-CBCERT)
Project planning and selection of SENTRON circuit breakers	www.siemens.com/sitrain-lowvoltage (LV-CBPROJ)
SIVACON 8PS	www.power-academy.siemens.com
SENTRON circuit protection devices with measuring and communication function	www.siemens.com/sitrain-lowvoltage (WT-LVBCOM)
Basic principles of electrical engineering	www.siemens.com/sitrain-lowvoltage (WT-LVBGET)
3WA air circuit breakers	www.siemens.com/sitrain-lowvoltage (WT-LV3WA)
LV-3WA Basic	www.siemens.com/sitrain-lowvoltage (LV-3WA_BA)
LV-3WA Advanced	www.siemens.com/sitrain-lowvoltage (LV-3WA_AD)
ALPHA 3200 low voltage switch boards – technic and software	www.siemens.com/sitrain-lowvoltage (LV-ALPHAT)
ALPHA 3200 low voltage switch boards – mounting	www.siemens.com/sitrain-lowvoltage (LV-ALPHAPB)
Maintenance and operation of 3WA circuit breakers	www.siemens.com/sitrain-lowvoltage (LV-3WAMAIN)
Maintenance and operation of 3WL circuit breakers	www.siemens.com/sitrain-lowvoltage (LV-3WLMAN)
3WL and 3WA air circuit breakers protection technology and communication	www.siemens.com/sitrain-lowvoltage (LV-COPR)
Digitalization in power distribution boards	www.siemens.com/sitrain-lowvoltage (WT-LVDIGI)
Energy Management with SENTRON powermanager – User training	www.siemens.com/sitrain-lowvoltage (LV-PM)
SENTRON powermanager graphic module – User training	www.siemens.com/sitrain-lowvoltage (LV-PMG)

Further links

SIRIUS

Industrial Controls – SIRIUS	www.siemens.com/sirius
Industry Online Support – SIRIUS	www.siemens.com/sirius/support
Catalogue IC 10	www.siemens.com/ic10
Brochures/catalogs	www.siemens.com/sirius/catalogs
SIRIUS Control for controlling and protecting	www.siemens.com/sirius-control
SIRIUS Command for commanding, signaling and detecting applications	www.siemens.com/sirius-command
SIRIUS Hybrid for starting motors	www.siemens.com/sirius-hybrid
SIRIUS Monitor for monitoring and responding	www.siemens.com/sirius-monitor
Control and signaling devices SIRIUS ACT – Performance in Action	www.siemens.com/sirius-act
IO-Link –the new communication standard	www.siemens.com/io-link
Systematic industrial safety technology: Safety Integrated	www.siemens.com/safety-integrated
SIMOCODE pro motor management	www.siemens.com/simocode
Explosion protection (ATEX)	www.siemens.com/sirius/atex
Configurators – SIRIUS	www.siemens.com/sirius/configurators
SIRIUS Media	www.siemens.com/sirius/news

Conditions of sale and delivery

1. General Provisions

By using this catalog you can purchase products (hardware, software and services) described therein from Siemens Aktiengesellschaft subject to the following Terms and Conditions of Sale and Delivery (hereinafter referred to as „T&C“). Please note that the scope, the quality and the conditions for supplies and services, including software products, by any Siemens entity having a registered office outside Germany, shall be subject exclusively to the General Terms and Conditions of the respective Siemens entity. The following T&C apply exclusively for orders placed with Siemens Aktiengesellschaft, Germany.

1.1 For customers with a seat or registered office in European Union

For customers with a seat or registered office in European Union, the following terms and conditions apply subordinate to T&C:

- for products, which include specific terms and conditions in the description text, these specific terms and conditions shall apply and subordinate thereto,
- for stand-alone software products and software products forming a part of a product or project, the „General License Conditions for Software Products for Automation and Drives for Customers with a Seat or registered Office in Germany“¹⁾ and/or
- for consulting services the „Allgemeine Geschäftsbedingungen für Beratungsleistungen der Division DF – Deutschland“ (available only in German) and/or
- for other services, the „Supplementary Terms and Conditions for Services (‘BL’)¹⁾ and/or
- for other supplies the „General Conditions for the Supply of Products and Services of the Electrical and Electronics Industry“¹⁾.

In case such supplies should contain Open Source Software, the conditions of which shall prevail over the „General Conditions for the Supply of Products and Services of the Electrical and Electronics Industry“¹⁾, a notice will be contained in the scope of delivery in which the applicable conditions for Open Source Software are specified. This shall apply mutatis mutandis for notices referring to other third party software components.

1.2 For customers with a seat or registered office outside European Union

For customers with a seat or registered office outside European Union, the following terms and conditions apply subordinate to T&C:

- for products, which include specific terms and conditions in the description text, these specific terms and conditions shall apply and subordinate thereto,
- for consulting services the „Standard Terms and Conditions for Consulting Services of the Division DF for Customers with a Seat or Registered Office Outside of Germany“¹⁾ and/or
- for other services the „International Terms & Conditions for Services“¹⁾ supplemented by „Software Licensing Conditions“¹⁾ and/or
- for other supplies of hard- and software the „International Terms & Conditions for Products“¹⁾ supplemented by „Software Licensing Conditions“¹⁾

1.3 For customers with master or framework agreement

To the extent our supplies and/or services offered are covered by an existing master or framework agreement, the terms and conditions of that agreement shall apply instead of T&C.

2. Additional Terms and Conditions

The dimensions are in mm. In Germany, according to the German law on units in measuring technology, data in inches apply only to devices for export.

Illustrations are not binding.

Insofar as there are no remarks on the individual pages of this catalog – especially with regard to data, dimensions and weights given – these are subject to change without prior notice.

¹⁾ The text of the Terms and Conditions of Siemens AG can be downloaded at https://mall.industry.siemens.com/legal/ww/en/terms_of_trade_en.pdf

3. Export Regulations

We shall not be obligated to fulfill any agreement if such fulfillment is prevented by any impediments arising out of national or international foreign trade or customs requirements or any embargoes and/or other sanctions.

Export may be subject to license. We shall indicate in the delivery details whether licenses are required under German, European and US export lists.

Our products are controlled by the U.S. Government (when labeled with „ECCN“ unequal „N“) and authorized for export only to the country of ultimate destination for use by the ultimate consignee or end-user(s) herein identified. They may not be resold, transferred, or otherwise disposed of, to any other country or to any person other than the authorized ultimate consignee or end-user(s), either in their original form or after being incorporated into other items, without first obtaining approval from the U.S. Government or as otherwise authorized by U.S. law and regulations. Products labeled with „AL“ unequal „N“ are subject to European/national export authorization.

The export indications can be viewed in advance in the description of the respective goods on the Industry Mall, our online catalog system. Only the export labels „AL“ and „ECCN“ indicated on order confirmations, delivery notes and invoices are authoritative.

Products without label, with label „AL:N“/„ECCN:N“, or label „AL:9X9999“/„ECCN: 9X9999“ may require authorization from responsible authorities depending on the final end-use, or the destination.

If you transfer goods (hardware and/or software and/or technology as well as corresponding documentation, regardless of the mode of provision) delivered by us or works and services (including all kinds of technical support) performed by us to a third party worldwide, you shall comply with all applicable national and international (re-)export control regulations. In any event of such transfer of goods, works and services you shall comply with the (re-) export control regulations of the Federal Republic of Germany, of the European Union and of the United States of America.

Prior to any transfer of goods, works and services provided by us to a third party you shall in particular check and guarantee by appropriate measures that

- there will be no infringement of an embargo imposed by the European Union, by the United States of America and/or by the United Nations by such transfer, by brokering of contracts concerning those goods, works and services or by provision of other economic resources in connection with those goods, works and services, also considering the limitations of domestic business and prohibitions of by-passing those embargos;
- such goods, works and services are not intended for use in connection with armaments, nuclear technology or weapons, if and to the extent such use is subject to prohibition or authorization, unless required authorization is provided;
- the regulations of all applicable Sanctioned Party Lists of the European Union and the United States of America concerning the trading with entities, persons and organizations listed therein are considered.

If required to enable authorities or us to conduct export control checks, you, upon request by us, shall promptly provide us with all information pertaining to the particular end customer, the particular destination and the particular intended use of goods, works and services provided by us, as well as any export control restrictions existing.

You acknowledge that under the EU embargo regulations against Iran, Syria and Russia respectively the sale of certain listed goods and related services is subject to authorization by the competent export control authorities of the European Union. If (1) the goods or services ordered by you are destined for Iran, Syria or Russia, and (2) the contract for our supplies and/or services is subject to prior authorization of the competent export control authorities of the European Union, the contract between you and us shall come into force in this respect only upon granting of such authorization.

The products listed in this catalog may be subject to European/ German and/or US export regulations. Any export requiring approval is therefore subject to authorization by the relevant authorities. Errors excepted and subject to change without prior notice.

Article number index

Article No.	Page
3K	
3KC03	9/24–9/25
3KC04	9/24–9/25
3KC34	9/8, 9/16
3KC43	9/16
3KC44	9/16
3KC64	9/8, 9/17
3KC83	9/17
3KC84	9/17
3KC90	9/32, 9/34
3KC91	9/26–9/27, 9/29
3KC92	9/26–9/27
3KC93	9/26–9/27, 9/29
3KC94	9/26–9/27, 9/29
3KC95	9/26–9/27, 9/29
3KC96	9/16, 9/18–9/19, 9/21
3KC97	9/19
3KC98	9/18–9/23
3KD01	8/70–8/72
3KD02	8/70–8/72
3KD03	8/70–8/72
3KD04	8/70–8/72
3KD05	8/70–8/72
3KD06	8/70–8/72
3KD16	8/70, 8/72–8/73
3KD22	8/70, 8/72–8/73
3KD26	8/70, 8/72–8/73
3KD28	8/70, 8/72–8/73
3KD30	8/70, 8/72–8/73
3KD32	8/70, 8/72–8/73
3KD34	8/70, 8/72–8/73
3KD36	8/70, 8/72–8/73
3KD38	8/70, 8/72–8/73
3KD40	8/70, 8/72–8/73
3KD42	8/70, 8/72–8/73
3KD44	8/70, 8/72–8/73
3KD46	8/70, 8/72–8/73
3KD48	8/70, 8/72–8/73
3KD50	8/70, 8/72–8/73
3KD52	8/70, 8/72–8/73
3KD54	8/70, 8/72–8/73
3KD56	8/70, 8/72–8/73
3KD90	8/74–8/78
3KD91	8/74–8/75, 8/77–8/79, 8/131–8/132, 9/26, 9/29
3KD92	8/74–8/75, 8/78–8/79, 9/26
3KD93	8/74–8/75, 8/78–8/79, 8/132, 9/28–9/29
3KD94	8/74–8/75, 8/78–8/79, 8/132, 9/28–9/29
3KD95	8/74–8/75, 8/78–8/79, 8/132, 9/28–9/29
3KF13	8/126–8/128
3KF14	8/126–8/127
3KF23	8/126–8/128
3KF24	8/126–8/127
3KF33	8/126–8/128
3KF34	8/126–8/127

Article No.	Page
3KF43	8/126–8/128
3KF44	8/126–8/127
3KF53	8/126–8/128
3KF54	8/126–8/127
3KF90	7/88, 8/132
3KF91	8/78–8/79, 8/129, 8/131, 8/133, 9/29
3KF92	8/78, 8/129, 8/132–8/133
3KF93	8/129, 8/132–8/133
3KF94	8/78, 8/129, 8/132–8/133
3KF95	8/78, 8/129, 8/133
3L	
3LD20	8/24–8/27, 8/30–8/33, 8/36–8/39, 8/46–8/49, 8/51
3LD21	8/24–8/27, 8/30–8/33, 8/36–8/39, 8/46–8/49, 8/51, 9/30–9/31
3LD22	8/24–8/27, 8/30–8/33, 8/36–8/40, 8/46–8/51, 9/30–9/31
3LD23	8/24–8/27, 8/30–8/33, 8/36–8/39, 9/30–9/31
3LD24	8/24–8/27, 8/30–8/33, 8/36–8/39, 9/30–9/31
3LD25	8/24–8/27, 8/30–8/33, 8/36–8/39, 8/46–8/49, 8/51, 9/30–9/31
3LD27	8/24–8/27, 8/30–8/33, 8/36–8/39, 8/46–8/49, 8/51, 9/30–9/31
3LD28	8/24–8/27, 8/30–8/33, 8/36–8/39, 8/46–8/49, 8/51
3LD30	8/14–8/19
3LD31	8/14–8/19
3LD32	8/14–8/19
3LD33	8/14–8/19
3LD34	8/14–8/19
3LD50	8/54, 8/56–8/61
3LD52	8/56–8/61
3LD54	8/54, 8/56–8/61
3LD56	8/56–8/61
3LD58	8/56–8/61
3LD92	8/24–8/39, 8/41–8/43, 8/46–8/49, 8/52–8/53, 8/56–8/58, 8/60–8/63, 9/30–9/31
3LD93	8/14–8/21
3N	
3NA30	7/44, 7/46
3NA31	7/44, 7/46
3NA32	7/45, 7/47, 7/50
3NA33	7/47
3NA34	7/47
3NA36	7/47
3NA38	7/44, 7/46
3NA61	7/36, 7/38–7/39
3NA62	7/37, 7/39
3NA68	7/36, 7/38
3NA71	7/40, 7/42–7/43
3NA72	7/41, 7/43
3NA78	7/40, 7/42
3NB11	7/70
3NB12	7/70
3NB13	7/70
3NB23	7/70
3NB33	7/59
3NC10	7/25, 7/72, 7/74, 7/84
3NC14	7/25, 7/72, 7/74, 7/76, 7/83, 7/85

Article No.	Page	Article No.	Page
3NC18	7/73	3NH40	7/10, 7/23
3NC22	7/25, 7/72, 7/75, 7/77	3NH42	7/10, 7/23
3NC23	7/25, 7/71–7/72, 7/77	3NH50	7/25, 7/55, 7/60, 7/73, 7/75, 7/77
3NC24	7/58–7/59, 7/62, 7/64	3NH53	7/25
3NC26	7/73, 7/77	3NH54	7/25, 7/58–7/59, 7/62–7/65
3NC32	7/65–7/66	3NH57	7/25, 7/73
3NC33	7/65, 7/67	3NH72	7/27
3NC34	7/65, 7/67	3NH73	7/27
3NC55	7/68	3NH74	7/27
3NC58	7/68	3NH75	7/23
3NC73	7/69	3NJ41	8/102, 8/104–8/105, 8/107, 8/109, 8/111
3NC84	7/58–7/59, 7/64	3NJ49	8/104, 8/106, 8/108, 8/110, 15/108, 15/179
3ND13	7/48	3NJ56	8/102
3ND18	7/48	3NJ59	8/102, 8/104, 8/106, 15/108
3ND21	7/48	3NJ63	8/141
3ND22	7/48	3NJ69	8/138–8/141, 10/38, 15/110–15/111
3ND23	7/48	3NP11	8/86–8/87, 15/106–15/107, 15/178
3NE10	7/54, 7/56	3NP19	8/88–8/94
3NE12	7/54, 7/57–7/58, 7/79	3NP40	15/192
3NE13	7/54, 7/57, 7/59, 7/79	3NP50	8/98, 13/29
3NE14	7/54, 7/57, 7/59, 7/79	3NP52	8/98
3NE18	7/54	3NP53	8/98
3NE32	7/58, 7/62	3NP54	8/98
3NE33	7/63	3NW10	7/80
3NE34	7/64	3NW11	7/80
3NE35	7/69	3NW12	7/80
3NE36	7/64–7/66	3NW13	7/80
3NE41	7/57, 7/61, 7/68–7/69	3NW20	7/80
3NE43	7/63, 7/69	3NW21	7/80
3NE53	7/59, 7/63	3NW22	7/80
3NE54	7/64–7/65	3NW23	7/80
3NE56	7/64	3NW30	7/80
3NE64	7/68	3NW31	7/80
3NE74	7/64	3NW32	7/80
3NE76	7/64–7/65	3NW33	7/80
3NE80	7/55–7/56, 7/60–7/61	3NW60	7/52, 7/78
3NE82	7/61–7/62	3NW61	7/52
3NE83	7/61	3NW62	7/52
3NE87	7/55, 7/60	3NW63	7/52
3NE88	7/56, 7/61	3NW66	7/78
3NE93	7/63	3NW70	7/24, 7/26, 7/78
3NE94	7/68	3NW71	7/24, 7/83, 7/85
3NE96	7/65	3NW72	7/24
3NG10	7/23, 8/93, 8/133	3NW73	7/24
3NG11	7/23	3NW74	7/11, 7/24, 7/28–7/29, 7/80, 13/23
3NG12	7/23, 8/93, 8/133	3NW75	7/28–7/29, 7/84
3NG13	7/23, 8/93, 8/133	3NW76	7/26, 7/78
3NG14	7/23, 8/93, 8/133	3NW79	7/24, 7/29
3NG15	7/23	3NW80	7/53
3NH30	7/10, 7/22–7/23	3NW81	7/53
3NH31	7/10, 7/22	3NW82	7/53
3NH32	7/10, 7/22, 7/27	3NX10	7/23, 7/88
3NH33	7/10, 7/22	3NX20	7/22
3NH34	7/10, 7/22	3NX31	7/22, 7/27
3NH35	7/22	3NY10	8/99

Article number index

Article No.	Page
3NY11	8/98–8/99
3NY12	8/98–8/99
3NY13	8/99
3NY14	8/99
3NY19	8/98–8/99
3NY30	8/98
3NY40	8/99

3S

3SU14	8/77, 8/132, 9/26
-------	-------------------

3T

3TX42	14/69
-------	-------

3V

3VA90	2/32, 2/60, 2/62–2/65
3VA91	1/7, 2/28–2/29, 2/35, 2/37, 2/39, 2/41, 2/43, 2/45–2/48, 2/50–2/52, 2/55–2/56, 2/60, 2/62, 2/64–2/65
3VA92	2/28–2/31, 2/35, 2/37, 2/39, 2/41, 2/43, 2/45, 2/47, 2/49–2/52, 2/55, 2/62, 2/64–2/65
3VA93	2/37, 2/39, 2/45, 2/47, 2/50–2/52, 2/55–2/56, 2/60, 2/62–2/63, 2/65
3VA94	2/28–2/31, 2/35, 2/37, 2/39, 2/41, 2/43, 2/45, 2/47, 2/49, 2/52, 2/55, 2/63
3VA95	2/39, 2/63, 2/65
3VA96	2/28, 2/30–2/32, 2/37, 2/41, 2/43–2/45, 2/47, 2/49, 2/51, 2/53, 2/60, 2/65
3VA99	2/26–2/27, 2/29–2/30, 2/32, 2/34, 2/51, 2/53, 2/55, 2/58, 2/60–2/63, 11/9, 11/11
3VA:	9/7
3VL12	15/184
3VL16	15/184
3VL94	11/9
3VW81	1/126, 2/74
3VW90	1/55, 1/106, 1/127–1/135, 2/61, 2/75–2/84
3VW97	1/131, 2/79–2/80, 2/82–2/83

3W

3WA91	1/42, 1/54–1/65, 1/104, 1/108–1/109, 15/48, 15/50, 15/52, 15/54, 15/56, 15/58, 15/60, 15/62
3WA:	1/3
3WL12	1/43
3WL91	1/34, 1/38, 1/41, 1/60, 1/103–1/112, 1/114–1/117, 1/134, 2/84
3WL93	1/103
3WL:	1/3, 9/7

3Z

3ZS27	10/25
-------	-------

4A

4AC24	12/10
4AC32	12/6–12/7
4AC37	12/8–12/9

Article No.	Page
4N	
4NC51	10/38–10/39
4NC52	10/38–10/39
4NC53	10/38–10/39
4NC54	10/38–10/39
4NC59	10/39

5S

5SA26	7/33
5SA27	7/33
5SA28	7/33
5SB26	7/33
5SB27	7/33
5SB28	7/33
5SB40	7/33
5SB41	7/33
5SB42	7/33
5SB43	7/33
5SD74	6/6–6/18
5SD80	7/33
5SE13	7/34
5SE20	7/32
5SE22	7/32
5SE23	7/32
5SF10	7/18
5SF12	7/18–7/19
5SF42	7/19
5SF50	7/18
5SF52	7/18
5SF60	7/9, 7/20, 13/23
5SF62	7/9, 7/20, 13/23
5SG13	7/8, 7/16, 7/83
5SG15	7/17
5SG16	7/17
5SG17	7/8, 7/16, 7/83
5SG18	7/17
5SG53	7/8, 7/16, 7/83
5SG55	7/17
5SG56	7/17
5SG57	7/8, 7/16, 7/83
5SG62	7/9, 7/20, 13/9, 13/22
5SG71	7/13, 8/143
5SG72	7/14, 8/115, 8/117, 8/143, 13/24
5SG76	7/12, 8/113
5SH11	7/18
5SH12	7/18
5SH20	7/20, 13/23
5SH22	7/20, 13/23
5SH34	7/19
5SH35	13/13, 13/17, 15/81
5SH37	7/19
5SH41	7/16
5SH43	7/16
5SH50	7/16

Article No.	Page
5SH51	7/17
5SH52	7/17, 7/20, 13/22
5SH53	7/83, 7/86
5SH54	7/16–7/17
5SH55	7/13–7/14, 8/143, 13/24
5SJ41	3/38
5SJ42	3/39
5SJ43	3/39
5SJ61	3/18
5SJ62	3/18
5SJ63	3/18
5SJ65	3/18
5SK91	3/45
5SL30	3/20
5SL31	3/12
5SL32	3/12
5SL33	3/12
5SL34	3/13
5SL35	3/12
5SL36	3/13
5SL41	3/16
5SL42	3/16
5SL43	3/17
5SL44	3/17
5SL45	3/16
5SL46	3/17
5SL60	3/22, 3/40
5SL61	3/14
5SL62	3/14
5SL63	3/14
5SL64	3/15
5SL65	3/14
5SL66	3/15
5SM21	4/32
5SM23	4/32–4/34, 4/36–4/37
5SM24	4/32, 4/34, 4/36
5SM26	4/32–4/34, 4/36–4/37
5SM27	4/32, 4/34, 4/36
5SM28	4/32–4/34, 4/36–4/37
5SM33	4/30–4/31
5SM34	4/30–4/31
5SM36	4/30–4/31
5SM37	4/31
5SM60	3/17, 3/23, 3/25, 3/27, 3/35, 3/40, 3/46, 3/57, 4/39, 4/41, 4/43, 4/47, 4/51–4/52, 4/56
5SP32	3/43
5SP33	3/43
5SP34	3/43
5SP37	3/42–3/43
5SP38	3/42–3/43
5SP41	3/28
5SP42	3/28
5SP43	3/29
5SP44	3/29
5SP51	3/30

Article No.	Page
5SP52	3/30
5ST10	3/46, 4/45, 4/56, 4/58–4/59
5ST11	14/81
5ST21	3/59, 4/68, 7/82, 7/86
5ST25	3/82–3/85
5ST26	7/24, 7/29
5ST30	3/13, 3/15, 3/17, 3/21, 3/23, 3/25, 3/27, 3/29, 3/31, 3/33, 3/35, 3/37, 3/39–3/40, 3/44, 3/46, 3/48–3/52, 3/54–3/56, 3/58, 4/15, 4/17, 4/19, 4/21, 4/23, 4/25, 4/27, 4/29, 4/33, 4/35, 4/37, 4/39, 4/41, 4/43, 4/47, 4/49, 4/51–4/54, 4/56, 4/58–4/62, 4/64–4/67, 5/13, 5/15, 5/17, 7/13, 8/143
5ST36	3/61–3/64, 3/66, 3/68–3/70, 3/72–3/73, 3/75–3/76, 3/78, 4/71, 4/73–4/74, 4/76, 4/79, 7/86–7/87
5ST37	3/62–3/70, 3/73–3/76, 3/78, 3/80, 4/71–4/74, 4/77–4/79, 7/82–7/87
5ST38	3/15, 3/17, 3/23, 3/25, 3/27, 3/29, 3/31, 3/33, 3/35, 3/37, 3/40, 3/44, 3/48, 3/50–3/52, 3/54–3/56, 3/58, 4/15, 4/17, 4/19, 4/21, 4/23, 4/25, 4/27, 4/29, 4/33, 4/35, 4/37, 4/39, 4/41, 4/43, 4/47, 4/51, 4/58, 4/60–4/62, 4/64–4/67, 5/7, 5/13, 5/15
5SU11	4/39
5SU13	4/38–4/40, 4/42–4/49
5SU14	4/43
5SU16	4/38–4/39, 4/42–4/43, 4/45, 4/47–4/49
5SU18	4/48
5SV13	4/50–4/51
5SV16	4/50–4/51
5SV31	4/14
5SV33	4/14–4/16, 4/20–4/22, 4/26, 4/28
5SV34	4/14–4/15, 4/20–4/21
5SV36	4/14–4/16, 4/20–4/22, 4/26, 4/28
5SV37	4/20, 4/28
5SV38	4/21
5SV41	4/18
5SV43	4/18, 4/24
5SV44	4/18, 4/24
5SV46	4/18, 4/24
5SV47	4/24
5SV60	4/53–4/54
5SV80	11/6
5SV81	11/8–11/11
5SV82	11/6
5SV87	11/7, 11/9–11/11
5SV89	11/7, 11/9, 11/11
5SW12	3/59
5SW30	3/59, 4/67
5SW33	4/31, 4/58–4/59
5SY17	3/44
5SY41	3/26
5SY42	3/26
5SY43	3/27
5SY44	3/27
5SY45	3/26
5SY46	3/27
5SY51	3/32
5SY52	3/32

Article number index

Article No.	Page
5SY54	3/32
5SY61	3/24
5SY62	3/24
5SY63	3/24
5SY64	3/25
5SY65	3/24
5SY66	3/25
5SY71	3/34
5SY72	3/34
5SY73	3/35
5SY74	3/35
5SY75	3/34
5SY76	3/35
5SY81	3/36
5SY82	3/36
5SY83	3/36
5SY84	3/37
5SY85	3/36
5SY86	3/37
5SZ92	4/68

5T

5TE25	5/16
5TE48	5/8–5/9
5TE58	5/10
5TE68	12/12–12/13
5TE81	5/6, 5/12
5TE82	5/12
5TE91	5/18, 12/12–12/13
5TG80	5/7, 5/9, 5/11
5TG82	3/58, 5/7, 5/13, 5/15, 5/29–5/30, 5/33, 11/22–11/23
5TL11	5/14–5/15
5TL12	5/14–5/15
5TL13	5/14–5/15
5TL14	5/14–5/15
5TL16	5/14–5/15
5TT31	5/47, 7/12–7/14, 7/17, 7/19–7/20, 7/88, 11/17, 11/23
5TT34	5/35, 11/12–11/15, 11/18–11/20, 11/22
5TT41	5/20–5/22
5TT42	5/28–5/29
5TT44	5/24
5TT49	5/21, 5/23, 5/25–5/27
5TT50	5/30
5TT52	11/21
5TT58	5/32
5TT59	5/31, 5/33–5/34
5TT61	11/16

6A

6AV66	10/24
-------	-------

6G

6GK19	1/42, 1/62
-------	------------

Article No.	Page
-------------	------

6M

6MF28	1/113, 2/58
-------	-------------

7K

7KM10	10/26
7KM22	10/26
7KM31	10/26–10/27
7KM32	10/26–10/27
7KM42	10/27
7KM52	10/3, A/5–A/6
7KM54	10/27
7KM92	10/29
7KM93	2/58, 10/28–10/29
7KM99	10/28
7KN11	3/41, 3/53, 4/55, 4/63, 7/50, 10/20
7KN13	10/18
7KN27	10/14
7KT12	10/31, 10/33–10/35, 10/39
7KT16	10/30
7KT55	10/36
7KT56	10/36
7KT58	10/36–10/37
7KT90	10/36

7L

7LF45	5/36–5/39
7LF49	5/38–5/40
7LF53	5/42–5/45
7LF63	5/46
7LF90	3/59, 5/40, 5/43, 5/45
7LQ23	11/24
7LQ29	11/24

8G

8GB13	15/209
8GB20	15/209
8GB45	3/59
8GB46	15/206–15/207
8GB50	15/206–15/208
8GB52	15/206
8GD60	15/21
8GD90	15/158, 15/197
8GD91	15/158, 15/197
8GD92	15/158, 15/199
8GE37	15/188
8GF57	15/148–15/151
8GF58	15/151
8GF71	15/154, 15/156
8GF93	14/68–14/69, 15/199
8GF96	15/144, 15/146–15/148, 15/151, 15/153–15/154, 15/156, 15/158, 15/197
8GK10	15/174–15/175
8GK11	15/170–15/171
8GK13	15/164, 15/166–15/168

Article No.	Page
8GK14	15/162
8GK20	15/140
8GK21	15/134
8GK23	15/136
8GK24	15/132
8GK40	15/190–15/191
8GK41	15/191
8GK43	15/176
8GK44	15/176–15/177
8GK45	15/177–15/178, 15/189
8GK46	15/178
8GK47	15/179, 15/182–15/187
8GK48	15/163, 15/180–15/181, 15/195–15/196
8GK63	15/146
8GK64	15/144–15/145
8GK67	15/142–15/143
8GK68	15/133, 15/144, 15/148–15/149, 15/151
8GK90	15/194–15/195, 15/202
8GK91	15/21, 15/135, 15/138–15/139, 15/141, 15/144, 15/153, 15/157, 15/162–15/163, 15/193–15/195, 15/202–15/203
8GK92	15/133
8GK93	15/194
8GK95	15/132, 15/134–15/135, 15/138, 15/141, 15/154–15/156, 15/158, 15/162, 15/166, 15/172, 15/194–15/195, 15/198
8GK96	15/133, 15/135, 15/139–15/140, 15/147, 15/150–15/153, 15/178, 15/192, 15/196
8GK97	15/149–15/151, 15/163, 15/178–15/179, 15/181, 15/192
8GK98	15/179
8GK99	15/21, 15/82, 15/112, 15/133–15/135, 15/139–15/140, 15/144, 15/148, 15/150–15/151, 15/153–15/154, 15/156–15/158, 15/162, 15/166, 15/178, 15/180–15/181, 15/193–15/194, 15/196–15/197, 15/199–15/200, 15/202, 15/209
8GS40	15/188, 15/195, 15/200

8H

8HC69	15/203
8HE85	15/203
8HP15	15/203
8HP18	15/21, 15/203

8J

8JK31	15/202
8JK40	15/201

8L

8LK32	15/20
-------	-------

8M

8MF10	17/13, 17/16–17/17, 17/21, 17/23, 17/25–17/31
8MF11	17/13, 17/25, 17/27–17/28, 17/30
8MF12	17/13, 17/23, 17/25, 17/28, 17/30–17/31
8MF13	17/27–17/28, 17/30
8MF14	17/27–17/28, 17/30
8MF15	17/27, 17/30
8MF16	17/30

Article No.	Page
8MF17	17/30
8MF18	17/23, 17/30–17/31
8MF19	17/30
8MF59	17/35
8MR21	17/41–17/45
8MR22	17/34
8MR60	17/38–17/39
8MR63	17/39
8MR64	17/37–17/40
8MR65	17/37–17/38

8P

8PQ10	15/30, 15/32, 15/34, 15/114
8PQ12	15/24, 15/26, 15/28, 15/56, 15/58, 15/60, 15/62, 15/110, 15/114
8PQ20	15/40–15/44, 15/48–15/54, 15/56–15/63, 15/66, 15/68, 15/70–15/80, 15/83, 15/104–15/112, 15/116, 15/141, 15/157
8PQ21	15/36–15/38, 15/111, 15/116
8PQ23	15/30–15/31, 15/34–15/35, 15/114–15/115
8PQ24	15/31, 15/115
8PQ25	15/31, 15/34
8PQ30	15/24–15/28, 15/45, 15/53, 15/56, 15/58, 15/60, 15/62, 15/64, 15/67, 15/69, 15/85, 15/87, 15/89, 15/91, 15/93, 15/95, 15/99, 15/103, 15/110–15/111, 15/113, 15/116–15/117, 15/120–15/121, 15/123–15/125, 15/127
8PQ40	15/45–15/47, 15/111, 15/113, 15/122–15/125, 15/149–15/150
8PQ50	15/44, 15/49, 15/51, 15/53, 15/55–15/63, 15/67, 15/69, 15/79, 15/84–15/103, 15/109, 15/126–15/128
8PQ60	15/49, 15/51, 15/53–15/55, 15/57, 15/59, 15/61, 15/63–15/64, 15/67, 15/69–15/80, 15/82–15/84, 15/86, 15/88, 15/90, 15/93, 15/95, 15/97–15/98, 15/101–15/102, 15/104–15/108, 15/112
8PQ94	8/141, 15/20–15/21, 15/28, 15/36, 15/38, 15/41, 15/44–15/46, 15/85, 15/87, 15/89, 15/91, 15/99, 15/103, 15/113, 15/128–15/129
8PQ95	15/20–15/21, 15/28, 15/46, 15/128
8PQ96	15/113
8PQ99	15/129

8U

8UC60	8/35, 8/76–8/77, 8/131, 9/28
8UC71	8/34
8UC72	8/34
8UD11	8/75, 8/130, 9/27
8UD17	2/30, 8/60, 8/63, 8/76, 8/130, 9/27
8UD18	2/80, 8/76, 8/130, 9/27
8UD19	2/30–2/32, 2/80, 8/61, 8/63, 8/76–8/77, 8/131, 9/28
8US12	8/98, 13/11, 13/17, 13/27, 13/29, 13/31, 15/81
8US13	13/29, 15/81
8US16	13/10–13/11
8US17	13/11
8US19	13/6–13/7, 13/9–13/14, 13/17, 13/19, 13/21, 13/27, 13/29, 13/31–13/32, 15/20, 15/45, 15/81, 15/180, 15/201

8W

Article number index

Article No.	Page
8WA10	14/62–14/63, 14/66–14/69, 14/71–14/75, 14/78
8WA12	14/63, 14/65
8WA13	14/63
8WA15	14/70
8WA16	14/69
8WA18	14/14, 14/64–14/68, 14/70–14/75, 14/78, 14/80–14/81
8WA20	14/76–14/77
8WA28	14/68–14/69, 14/80
8WA71	14/71
8WA75	14/81
8WA82	14/68, 14/80
8WA83	14/68, 14/79–14/80
8WA88	14/78, 14/80–14/81
8WC50	13/12
8WC51	13/6–13/7, 13/12
8WH10	8/52–8/53, 14/44–14/55
8WH12	14/19, 14/21
8WH18	14/64
8WH20	14/24–14/25, 14/27–14/32, 14/34–14/35
8WH21	14/26
8WH30	14/40–14/42
8WH50	14/36
8WH51	14/37
8WH60	14/8–14/16, 14/18–14/23
8WH81	14/17, 14/57–14/59
8WH82	3/59, 4/67, 14/57, 14/78
8WH90	3/45, 14/8–14/15, 14/17–14/32, 14/34–14/38, 14/40–14/42, 14/44–14/56, 14/60–14/61, 14/72
8WH91	14/10, 14/18–14/22, 14/38, 14/46–14/47, 14/50, 14/53, 14/55–14/56, 14/60

US

US2:	10/32–10/33, 10/35, A/16
------	--------------------------

Index

Keyword	Page
0–9	
19-inch expansion	17/30
3KC ATC transfer control devices	9/32
3KC0 manual transfer switching equipment	9/24
3KC3 and 3KC4 remote transfer switching	9/16
3KC6 and 3KC8 automatic transfer switching	9/17
3KD switch disconnectors	8/64–8/79
3KF switch disconnectors with fuses	8/118–8/133
3LD switch disconnectors 3LD3 main control and EMERGENCY-STOP switches, installation in distribution boards	8/18
3LD switch disconnectors	8/12–8/63
3LD2 load transfer switches	9/30
3NA COM LV HRC fuse links	7/50
3NJ4 fuse switch disconnectors	8/100–8/111
3NJ63 switch disconnectors with fuses	8/134–8/141
3NP1 fuse switch disconnectors	8/82–8/95
3NP5 fuse switch disconnectors	8/96–8/99
3VA1 molded case circuit breakers	2/8–2/11
3VA10 – 3VA26	2/20–2/65
3VA2 molded case circuit breakers	2/12–2/15
3VA27	2/66–2/84
3VL	2/85
3WA11 – 3WA13	1/28–1/65
3WL10	1/118–1/135
3WL11 – 3WL13	1/82–1/117
40 mm 8US busbar system	13/6
4AC2 electronic power supply unit	12/10
4AC32 bell transformer	12/6
4AC37 safety transformer	12/8
5SD74 combination surge arresters,	6/8, 6/12
5SD74 lightning arresters, type 1	6/6
5SD74 surge arresters, type 1 + type 2 + type 3	6/10
5SD74 surge arresters, type 2	6/14–6/17
5SD74 surge arresters, type 3	6/18
5SG switch disconnectors with fuses	8/142
5SG76 fuse switch disconnectors	8/112
5SJ4...HG... miniature circuit breakers	3/38
5SJ6...-KS miniature circuit breakers	3/18
5SK9 device protection switches	3/45
5SL3 miniature circuit breakers	3/12
5SL30 miniature circuit breakers	3/20
5SL4 miniature circuit breakers	3/16
5SL6 COM miniature circuit breakers	3/40
5SL6 miniature circuit breakers	3/14
5SL60 miniature circuit breakers	3/22
5SM2 RC units	4/32–4/37
5SM3 RCCBs	4/30
5SM6 arc fault detection units	4/52
5SP3 selective main miniature	3/42
5SP4 miniature circuit breakers	3/28
5SP5 miniature circuit breakers	3/30
5SU1 RCBOs	4/38–4/49
5SV RCCBs	4/14–4/25
5SV1 RCBOs	4/50

Keyword	Page
5SV3 RCCBs (SIQUENCE)	4/26–4/29
5SV6 AFDD/MCB	4/53
5SV6 COM AFDD/MCB	4/54
5SV8 modular residual current device	11/8–11/11
5SV8 residual current monitors	11/6
5SY17 device protection switches	3/44
5SY4 miniature circuit breakers	3/26
5SY5 miniature circuit breakers	3/32
5SY6 miniature circuit breakers	3/24
5SY7 miniature circuit breakers	3/34
5SY8 miniature circuit breakers	3/36
5TE DC isolator	5/16
5TE busbars	5/18
5TE48 pushbuttons	5/8
5TE58 light indicators	5/10
5TE6 socket outlet for modular installation	12/12
5TE8 control switches	5/6
5TE81/82 On/Off switches	5/12
5TL1 On/Off switches	5/14
5TT3 fuse monitors	11/17
5TT3 insulation monitors for industrial applications	11/20
5TT3 level relays	11/22
5TT3 line circuit relays	11/23
5TT3 phase monitors	11/18
5TT3 phase sequence monitors	11/19
5TT3 short-time voltage relay	11/14
5TT3 soft-starting devices	5/35
5TT3 timers for industrial applications	5/47
5TT3 undervoltage and overvoltage relays	11/15
5TT3 undervoltage relays	11/12–11/13
5TT4 auxiliary switches	5/26
5TT41 remote control switches	5/20–5/23
5TT42 switching relays	5/28
5TT44 remote control switches	5/24
5TT5 EMERGENCY STOP modules	11/21
5TT5 auxiliary switches	5/34
5TT50 Insta contactors	5/30
5TT58 Insta contactors	5/32
5TT6 current relays	11/16
60 mm 8US busbar system	13/12–13/33
60 mm 8US compact busbar system	13/7–13/11
7KM PAC measuring devices	10/26–10/31
7KN Powercenter	10/18–10/21
7LF4 digital time switches	5/36–5/41
7LF5 mechanical time switches	5/42–5/45
7LF6 timers for buildings	5/46
7LQ2 twilight switches	11/24
8WA terminal blocks	14/6, 14/62–14/81
8WA1 screw terminals	14/62–14/75
8WA2 spring-loaded terminals	14/76
8WH screw terminals	14/44–14/56
8WH terminal blocks	14/4, 14/8–14/61
8WH2 spring-loaded terminals	14/24–14/35
8WH3 insulation displacement terminals	14/40–14/43
8WH5 combination plug-in terminals	14/36–14/39

Index

Keyword	Page
8WH6 iPo installation terminals	14/18–14/23
8WH6 iPo plug-in terminals	14/8–14/17

A

ALPHA 1250 floor-mounted	15/162
ALPHA 1250 marshaling boxes	15/164
ALPHA 160 distribution boards	15/174
ALPHA 3200 Eco power distribution boards	15/18–15/21
ALPHA 400 distribution boards	15/170, 15/172
ALPHA 630 UNIVERSAL floor-mounted	15/136–15/139
ALPHA 630 UNIVERSAL wall-mounted	15/134
ALPHA 630 floor-mounted	15/166
ALPHA 630 marshaling boxes	15/168
ALPHA 800 UNIVERSAL floor-mounted	15/132
ALPHA SIMBOX WP small distribution boards	15/209
ALPHA SIMBOX XL small distribution boards	15/206–15/208
ALPHA UNIVERSAL 125 distribution boards	15/140
ALPHA UNIVERSAL distribution boards (NF technology)	15/130–15/159
ALPHA distribution boards (DIN technology)	15/160–15/203
Accessories	3/46–3/85, 4/56–4/79, 7/82–7/89, 9/18–9/23, 9/26–9/29, 10/10, 15/152–15/158, 15/193–15/203
Accessories and spare parts	1/54–1/65, 1/103–1/117, 1/130–1/135
Accessories for 8WA terminal blocks	14/78–14/81
Accessories for 8WH terminal blocks	14/57–14/61
Accessories for busbars	3/76–3/81
Accessories for connection and insulation	2/78
Accessories for transfer control devices	9/34
Accessory options	1/42–1/49, 1/90–1/100, 1/124, 2/72
Air Circuit Breakers	1/1–1/135
Air conditioners/cooling devices	17/40
All the information you need	1/2–1/3, 2/2–2/3, 3/2–3/3, 4/2–4/3, 5/2–5/3, 6/2–6/3, 7/2–7/3, 8/2–8/3, 9/2–9/3, 10/2–10/3, 11/2–11/3, 12/2–12/3, 13/2–13/3, 14/2–14/3, 15/2–15/3, 16/2–16/3, 17/2–17/3
Appendix	A/1–A/20
Applications	9/6
Arc fault detection devices (AFDDs)	4/12
Arc fault detection devices Miniature circuit breakers	4/57
Device protection switches Switching devices	
Article number index	A/10–A/16
Assembly kits	15/142–15/147, 15/176–15/189
Auxiliary releases, closing coils	2/81–2/82

B

Basic units	3/12–3/45, 4/14–4/55, 6/6–6/19
Bus-mounting bases	7/20
Busbar Systems	13/1–13/33
Busbar Trunking Systems	16/1–16/3
Busbar systems	15/45–15/46
Busbar trunking systems	16/4–16/9
Busbars	7/82–7/87, 15/148–15/151, 15/192

Keyword	Page
---------	------

C

Circuit breakers and non-automatic circuit breakers	1/4–1/13, 1/66–1/71
Class CC fuse holders	7/29
Class CC fuse links	7/80
Class J fuse holders	7/28
Communication	1/27, 2/56–2/60
Compact busbars	3/71–3/74, 4/75–4/78
Conditions of sale and delivery	A/8–A/9
Connection technology	2/36–2/48
Connection	1/26, 1/80
Control cabinets/System cubicles	1/26–1/27
Cover frame and mounting	2/64
Current transformers	10/38–10/39
Cylindrical fuse holders	7/24
Cylindrical fuse links	7/52

D

DIAZED fuse bases	7/18
DIAZED fuse links	7/33
Device protection switches	3/10
Devices for all applications	3/4
Distribution blocks for DIN-rail mounting	3/82–3/84
Distribution systems	1/24–1/25, 15/4–15/8

E

Electrical accessories	3/48, 3/50–4/66
Electronic trip unit ETU and accessories	1/127–1/128, 2/75–2/76
Electronic trip unit ETU300	1/19
Electronic trip unit ETU600	1/20–1/24
Electronic trip unit	1/18
Electronic trip units ETU	1/76–1/79
Enclosure	15/30–15/44
Examples of digitalization in industry	I/11
Examples of digitalization in infrastructure	I/10

F

Fan heaters	17/42
Filter fans and outlet filters	17/37–17/38
Frame	15/24–15/28
Fuse Systems	7/1–7/89
Fuse holders and bases for SITOR semiconductor fuses	7/25
Fuse holders and bases	7/8–7/29
Fuse links	7/30–7/81
Fuse switch disconnectors	8/80–8/113
Fuseless switch disconnectors	8/6–8/79

G

General accessories interior installation	17/26–17/29
Guide frames for AC	1/51–1/52, 1/101
Guide frames for DC	1/53, 1/102
Guide frames	1/126, 2/74

Keyword	Page
H	
Hardware components	10/6–10/9
Heater units	17/41
Hygrostats and hygrotherms	17/45
I	
Index	A/17–A/20
Installation switching devices	5/6–5/35
Internal accessories	2/26
Internal separation	15/118–15/129
Introduction to the topic of digitalization and Industry 4.0	I/12–I/13
Introduction to the topic of digitalization	I/12
Introduction	I/2–I/27, 4/5
L	
LED lights	17/34
LV HRC fuse bases	7/22
LV HRC fuse links	7/36–7/49
LV HRC signal detectors	7/88
Link directory	A/2–A/7
Load transfer switches	9/30–9/31
Locking provisions and interlocks	2/83–2/84
Locking, blocking and interlocking	2/62
M	
MINIZED fuse switch disconnectors	7/12
MINIZED switch disconnectors with fuses	7/13
Manual operators	2/28, 2/30, 2/32
Measuring Devices, Power Monitoring and Digitalization Solutions	10/1–10/39
Measuring devices	10/26–10/37
Mechanical accessories	3/58, 4/67
Miniature Circuit Breakers	3/1–3/85
Molded Case Circuit Breakers	2/1–2/85
Molded case circuit breakers and switch disconnectors for all applications	2/4–2/5
Molded case circuit breakers and switch disconnectors and accessories	2/6
Monitoring Devices	11/1–11/25
Monitoring devices for electrical values	11/6–11/20
Monitoring devices for plants and equipment	11/21–11/25
Motor operators and manual operators	2/80
Motor operators	2/34
Mounting concept and accessories	9/12–9/15
Mounting panels	17/23
Mounting plates	17/24
Mounting rails	17/25
N	
NEOZED bus-mounting switch	7/14
NEOZED fuse bases	7/16
NEOZED fuse links	7/32
New products	I/3

Keyword	Page
Non-automatic circuit breakers for DC	1/14–1/16, 1/72–1/74
O	
Online configurator highlights	1/30, 1/84, 1/120, 2/18, 17/8
Operating mechanism, auxiliary release	1/81
Overview of fuse systems according to IEC	7/6–7/7
Overview of protection, switching, measuring and monitoring tasks	I/14–I/22
Overview of the modular system	3/46
Miniature circuit breakers	
Overview of the modular system	4/56
Residual current protective devices	
Overvoltage Protection Devices	6/1–6/19
P	
PAC/3WL/3VA SIMATIC PCS 7 library	10/25
Photovoltaic cumulative fuse bases	7/27
Photovoltaic cumulative fuse links	7/79
Photovoltaic cylindrical fuse holders	7/26
Photovoltaic cylindrical fuse links	7/78
Planning and installation tools	16/6, 16/8
Plug-in and withdrawable technology	2/50, 2/52
Power Distribution Boards, Motor Control Centers and Distribution Boards	15/1–15/209
Power distribution boards and motor control centers	15/14–15/17
Power monitoring	10/4
Power supply units	12/10–12/11
Products and their applications in industry	I/9
Products and their applications in infrastructure	I/8
Q	
Quick selection guide	2/6–2/19, 3/6–3/11, 4/6–4/13, 8/4–8/5, 9/6–9/11, 10/4–10/11, 13/5, 14/4–14/7, 15/4–15/17, 16/4–16/9, 17/7, 17/10, 17/32, 17/36
Quick selection guide 3WA	1/4–1/27
Quick selection guide 3WL	1/66–1/81
Quick selection guide of fuse holders, bases	7/8, 7/10
Quick selection guide of fuse links	7/30
Quick-assembly kits	15/190
R	
RC units	4/8
RCBOs	4/10
RCCB protective socket outlets	4/68
RCCBs	4/6
Residual Current Protective Devices/ Arc Fault Detection Devices (AFDDs)	4/1–4/79
Residual current devices RCD According to IEC 60947-2 Annex B (Type A, Type B) and according to	2/54
Residual current protective devices Arc fault detection devices Device protection switches Switching devices	3/47
Roof filter fans and roof outlet filters	17/39

Index

Keyword	Page
S	
SEM3 multichannel current measuring system	10/32
SEM3T multichannel temperature measuring	10/34
SENTRON powerconfig	10/12
SENTRON powermanager	10/14–10/17
SENTRON powermind	10/22
SIKclip wiring system	3/85
SILIZED fuse links	7/34
SIMARIS planning tools	1/23, 15/16
SIMARIS® Planning Tools	1/23
SIMATIC Energy Suite	10/24
SITOR semiconductor fuse links	7/54–7/77
SIVACON 8MF/8MR system lighting	17/32–17/35
SIVACON 8MF1 basic cubicles	17/7–17/9
SIVACON 8MF1 configurable enclosures	17/10–17/31
SIVACON 8MR system air-conditioning	17/36–17/45
SIVACON 8PS busbar trunking systems	16/4
SIVACON S4 power distribution boards	15/22–15/129
SIVACON S8/SIVACON S4/ALPHA 3200/	15/12, 15/14
Section expansion	15/48–15/117
Slimline lights	17/35
Small distribution boards	15/204–15/209
Socket outlets	12/12–12/13
Software and digitalization solutions	10/12–10/25
Special colors for ALPHA	15/10
Standard busbars	3/60–4/75
Structure of the article numbers	1/32–1/41, 1/86–1/89, 1/122, 2/22–2/25, 2/68–2/71, 17/9
Summary of power consumption data	1/50
Sustainability@SI	1/2
Switch Disconnectors	8/1–8/143
Switch disconnectors with fuses	8/114–8/143
Switching Devices	5/1–5/47
System Cubicles, System Lighting and System Air-Conditioning	17/1–17/45
System overview 3WA11 – 3WA13	1/28
System overview 3WL10	1/118
System overview 3WL11 – 3WL13	1/82
System overview	2/20, 2/66, 3/5, 4/4, 5/4–5/5, 6/4–6/5, 7/4–7/5, 9/4–9/5, 11/4–11/5, 12/4–12/5, 13/4, 15/18, 15/22, 15/130, 15/160, 15/204, 17/4–17/6

T	
Terminal Blocks	14/1–14/81
The fast route to the product	1/4–1/7
Thermostats	17/43–17/44
Time and pulse counters	10/36
Timers	5/36–5/47
Transfer Switching Equipment and Load Transfer Switches	9/1–9/35
Transfer control devices	9/32–9/35
Transfer switching equipment and	9/8, 9/10

Keyword	Page
Transfer switching equipment	9/16–9/29
Transformers, Power Supply Units and Socket Outlets	12/1–12/13
Transformers	12/6–12/9
Trip units	2/16
Tripping characteristics	1/18–1/21

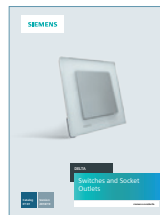
Catalogs and further information



LV 10 Low-Voltage Power Distribution and Electrical Installation Technology

SENTRON • SIVACON • ALPHA

PDF (E86060-K8280-A101-B6-7600)



ET D1 Switches and Socket Outlets

DELTA

PDF



LV 13 3WA Air Circuit Breakers

SENTRON

PDF (E86060-K8280-B101-A1-7600)



Industry Mall

Information and Ordering Platform
on the Internet:

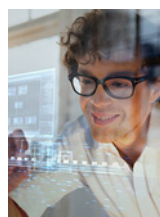
www.siemens.com/industrymall



LV 18 Air Circuit Breakers and Molded Case Circuit Breakers with UL Certification

SENTRON

PDF (E86060-K8280-E347-A9-7600)



SITRAIN

Digital Industry Academy

www.siemens.com/sitrain



IC 10 Industrial Controls

SIRIUS

PDF (E86060-K1010-A101-B5-7600)



Siemens TIA Selection Tool

for the selection, configuration and
ordering of TIA products and devices

www.siemens.com/tst

The catalogs listed above and additional catalogs are
available in PDF format at Siemens Industry Online Support
www.siemens.com/lowvoltage/catalogs

Further information on low-voltage power distribution
and electrical installation technology is available on the
Internet at www.siemens.com/lowvoltage

Get more information

www.siemens.com/lowvoltage

Published by
Siemens AG

Smart Infrastructure
Electrical Products
Siemensstraße 10
93055 Regensburg, Germany

For the U.S. published by
Siemens Industry Inc.

100 Technology Drive
Alpharetta, GA 30005
United States

PDF (E86060-K8280-A101-B6-7600)
KG 1222 1232 En
Produced in Germany
© Siemens 2022

Security information

Siemens provides products and solutions with industrial security functions that support the secure operation of plants, systems, machines and networks.

In order to protect plants, systems, machines and networks against cyber threats, it is necessary to implement – and continuously maintain – a holistic, state-of-the-art industrial security concept. Siemens' products and solutions constitute one element of such a concept.

Customers are responsible for preventing unauthorized access to their plants, systems, machines and networks. Such systems, machines and components should only be connected to an enterprise network or the internet if and to the extent such a connection is necessary and only when appropriate security measures (e.g. firewalls and/or network segmentation) are in place.

For additional information on industrial security measures that may be implemented, please visit <https://www.siemens.com/industrialsecurity>.

Siemens' products and solutions undergo continuous development to make them more secure. Siemens strongly recommends that product updates are applied as soon as they are available and that the latest product versions are used. Use of product versions that are no longer supported, and failure to apply the latest updates may increase customer's exposure to cyber threats.

To stay informed about product updates, subscribe to the Siemens Industrial Security RSS Feed under <https://www.siemens.com/cert>.

Subject to changes and errors. The information given in this document only contains general descriptions and/or performance features which may not always specifically reflect those described, or which may undergo modification in the course of further development of the products. The requested performance features are binding only when they are expressly agreed upon in the concluded contract.

All product designations may be trademarks or other rights of Siemens AG, its affiliated companies or other companies whose use by third parties for their own purposes could violate the rights of the respective owner.