



16/2	SITRAIN – Digital Industry Academy
16/4	Logistics
16/9	Standards and approvals
16/15	Quality management
16/16	Partners at Siemens
16/17	Siemens Partner Program
16/18	External partners
	Industry Services
16/19	Industry Services – Portfolio
16/22	Online Support
16/23	Software licenses
16/25	Conditions of sale and delivery

Appendix

SITRAIN – Digital Industry Academy

Introduction



The Future of Learning starts now

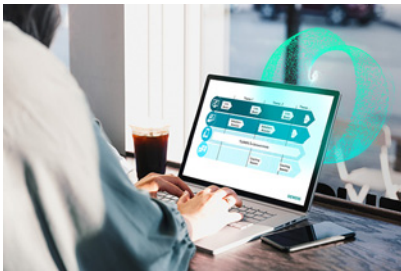
Globalization, digitalization, new work, Internet of Things, new business models – our way of working, living and learning is changing rapidly. With SITRAIN, the future of learning begins today: SITRAIN stands for a modern learning culture that focuses on the needs of learners and the demands of innovative companies.

With SITRAIN – Digital Industry Academy, the future of learning is yours.

Face-to-face training or digital training, location-independent, 24/7, on-demand or learning at fixed dates and course times?

With a personal learning consultant, in a team, or on your own responsibility? Everything is possible. SITRAIN offers a wide range of different learning options with the "Learning Journey", "Learning Membership" and "Learning Event".

The three learning formats of SITRAIN – Digital Industry Academy



Learning Journey

The combination for sustainable learning success

- The optimal mix of self-study units and guided live modules
- Includes a Learning Membership to work through the self-study modules and access on-demand content
- The SITRAIN learning consultant is available for questions and one-on-one consultations
- Ideal integration into the daily work routine and adaptation to one's own learning pace.



Learning Membership

Securing knowledge through continuous learning on your own responsibility

- With access to the comprehensive and constantly growing range of self-study units on SITRAIN access, the digital learning platform
- Search and find specific learning content or simply have a look around – anytime and anywhere
- A modern learning culture through continuous learning on your own responsibility and transparency about your learning success in the team or company.



Learning Event

Acquire theoretical and practical knowledge in a compact and guided format

- You achieve a defined learning goal in the shortest possible time
- The learning consultant guides you through the practical exercises and is also exclusively available to you during the theoretical sessions for the entire duration
- Focused learning, outside of the daily work routine, in a protected learning environment – virtually, in the training center, or at your company.

Introduction

Expand your knowledge, apply what you have learned, develop future skills

The SITRAIN Digital Industry Academy combines didactically effective methods and modular options.



Effective



Flexible



Relevant



Continuous

The four building blocks of SITRAIN – Digital Industry Academy

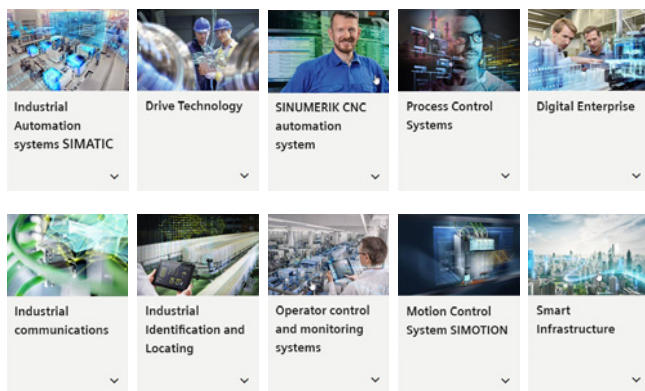
Different methods for maximum learning success:

- Live
- On your own responsibility
- On demand
- Individual

Learn the way you want to learn. For learning success that takes you further.

Education and training directly from the manufacturer

For individual knowledge building, the following topics concerning the industrial product and solution portfolio of Siemens are available. Experience the new learning culture with SITRAIN.



Training cases catalog

<https://www.siemens.com/sitrain-catalog-training-cases>



Find
your local
offer here



SITRAIN – Digital Industry Academy worldwide

You will find the regional knowledge offer in the country selection. One click will take you to the corresponding website.

SITRAIN – Digital Industry Academy

www.siemens.com/sitrain

- SITRAIN Learning Journey:
www.siemens.com/sitrain-learning-journey
- SITRAIN Learning Membership:
www.siemens.com/sitrain-learning-membership
- SITRAIN Learning Event:
www.siemens.com/sitrain-learning-event

Appendix

Logistics

Overview

General

With regard to delivery service, communications and environmental protection, our logistics service ensures "quality from the moment of ordering right through to delivery". By designing our infrastructure according to customer requirements and implementing electronic order processing, we have successfully optimized our logistics processes.

Our delivery processes are designed such that, as a rule, a confirmed deadline is not generally exceeded. In fact, wherever possible, we aim to deliver up to three working days ahead of schedule to optimize the overall delivery situation (e.g. in anticipation of holidays and peak order periods).

We are proud of our personal consulting service, on-time deliveries and one-day delivery within Germany.

To achieve this, we supply the preferred types marked with ► ex warehouse¹⁾.

We regard the ISO 9001 certification and consistent quality checks as an integral part of our services.

Electronic order processing is fast, cost-efficient and error-free. Please contact us if you want to benefit from these advantages.

¹⁾ Due to the current tight delivery situation on the market, no standard delivery times or preferred types are listed for our articles in this edition of the catalog.
Current information is given at the Mall for the respective article number, at www.siemens.com/sirius/mall.

Packaging, packing units

The packaging in which our equipment is dispatched provides protection against dust and mechanical damage during transport, thus ensuring that you receive our products in a perfect state.

We select our packaging for maximum environmental compatibility and reusability and, in particular, with a view to reducing waste.

With our multi-unit packaging and reusable packaging, we offer you specific types of packaging that are both kind to the environment and tailored to your requirements.

Your advantages at a glance:

- Lower order costs
- Cost savings through uniform-type packaging: low/no disposal costs
- Reduced time and cost thanks to short unpacking times
- "Just-in-time" delivery directly to the production line helps reduce stock: cost savings through reduction of storage area
- Fast assembly thanks to supply in sets
- Standard Euro boxes – corresponding to the Euro pallet modular system – suitable for most conveyor systems
- Active contribution to environmental protection

Unless stated otherwise in the "Selection and ordering data" of this catalog, our products are supplied individually packed.

For small parts/accessories, we offer you economical packaging units as standard packs containing more than one item, e.g. 5, 10, 50 or 100 units. It is essential that whole number multiples of these quantities be ordered to ensure satisfactory quality of the products and problem-free order processing.

The products are delivered in a neutral carton. The label includes warning notices, the CE mark and product description information in English and German.

In addition to the article number (MLFB) and the packed number of items in the packaging the Instr. Order No. is also specified for the operating instructions, which can be obtained from your local Siemens representative (you will find a list of your local Siemens contacts at www.siemens.com/automation-contact).

The device article number of most devices can also be acquired through the EAN barcode to simplify ordering and storage logistics.

The related master data are available from your local Siemens representative.

Multi-unit and reusable packaging

The devices listed in the tables [from page 16/6 onwards](#) can be ordered in multi-unit or reusable packaging (further versions on request).

If ordering multi-unit or reusable packaging for the first time, please first consult your local Siemens representative with regard to pack type, quantity, delivery time and the precise order designation. Use of the reusable packaging is reserved solely for customers that have signed a packaging return agreement with their Siemens representative in advance.

Multi-unit and reusable packaging is not available as a pack type for all products. Some products are unsuited for this pack type and would only involve an increased risk of damage in transit.

For both pack types, the quantity of devices ordered (per article number) must be divisible by the pack quantity. If this is not the case, the electronic order processing system rounds up to the next integer multiple of packaging.

Multi-unit packaging



Products in a quantity sufficient to fill a multi-unit packaging: 1/2 (W96) and 1/4 (W97) ENK

As standard, multi-unit packs contain uniform-type, unpacked individual products (one device type) in an appropriately sized carton made of recyclable cardboard. The products of the SIRIUS range can be ordered in units of 1/1, 1/2, 1/4 and 1/8 standard Euro boxes (ENK).

Reusable packaging (uniform type)



Standard Euro box (ENK) made of durable molded plastic with foam inserts

Standard reusable packaging contains uniform-type, un-packed individual products (one device type) in a reusable standard Euro box (ENK) made of durable molded plastic with foam inserts for protection during transport.

The standard Euro box (ENK) also serves as transport packaging. The reusable packaging (ENK) plus foam inserts are returned by the customer (free of charge) to the supply base.

Please contact your Siemens representative to clarify the delivery details or conditions for reusable packaging (ENK) (to find Siemens representatives, [see www.siemens.com/automation-contact](http://www.siemens.com/automation-contact)). Suitable arrangements will then be agreed with you.

Set deliveries (reusable, different devices)

On request, we also deliver order-related packs of larger quantities of different types of devices in a standard Euro box (ENK).

Please contact your Siemens representative to clarify the delivery details or conditions for set supply or delivery in reusable packaging. Suitable arrangements will then be agreed with you.

Packaging dimensions

Packing material	Length mm	Height mm	Width mm
ENK	596	219	396
W95	575	190	375
W96	375	190	290
W97	290	190	195
W98	290	100	195

Appendix

Logistics

Multi-unit and reusable packaging, quantity in units, supplied in indivisible pack quantities with delivery time on request

SIRIUS

Devices	Size	Reusable	Multi-unit			
		X95 (1/1 ENK)	W95 (1/1 ENK)	W96 (1/2 ENK)	W97 (1/4 ENK)	W98 (1/8 ENK)
3RT2 contactors						
3RT201..-1A..1/-1A..2	S00	144	--	72	40	--
3RT201..-1B..1/-1B..2	S00	72	--	72	40	--
3RT201..-2A../-2B...	S00	120	--	60	32	--
3RT202..-1A..0/-2B..0	S0	48	--	24	12	--
3RT202..-2A..0/-2B..0	S0	40	--	18	8	--
3RT203..-....0	S2	30	--	15	6	--
3RT203..-....4	S2	30	--	15	--	--
3RH29 snap-on auxiliary switches						
3RH2911-1F./-1GA/-1HA	--	351	--	240	120	60
3RH2911-2F./-2G./-2H./-2X.	--	321	--	196	100	50
3RH2911-2D.	--	321	--	--	--	--
3RH21 contactor relays						
3RH21...-1A..0	S00	144	--	72	40	--
3RH21...-1B..0	S00	72	--	72	40	--
3RH21...-2A..0/-2B..0	S00	120	--	60	32	--
3RV2 motor starter protectors						
3RV2011-...10/-...15	S00	43	--	24	12	--
3RV2011-...20/-...25	S00	40	--	16	8	--
3RV2021-...10/-...15	S0	43	--	24	12	--
3RV2021-...20/-...25	S0	35	--	16	8	--
3RV2031-...0/-...5	S2	24	--	12	5	--
3RU2 thermally delayed overload relays						
3RU2116-..B0	S00	64	--	32	16	--
3RU2116-..C0	S00	56	--	24	12	--
3RU2126-..B0	S0	56	--	32	16	--
3RU2126-..C0	S0	48	--	24	12	--
3RU2136-..B0	S2	36	--	18	--	--

When ordering products in multi-unit packaging for devices from the SIRIUS range, the article number of the product concerned must be supplemented with **"-Z"** and, in addition, the order code **"W9."** must be specified.

Ordering example:
3RT2015-1AB02-Z W97;
Order quantity 40 items →
Packed number of items 40

For products packed in reusable packaging, the article number must be supplemented with **"-Z"** and the order code **"X95"**.

Ordering example:
3RT2018-1AB01-Z X95;
Order quantity 144 items →
Packed number of items 144

SIRIUS

Multi-unit packaging with order code X90 (on request)

Devices	Size mm	Multi-unit or quantity per pack X90
SlimLine Compact modules		
• 3RK2200-0C.00-2AA2 (SC17.5), 3RK1.05-.B.00-2AA2 (SC17.5F)	17.5	16
• 3RK..0-..E00-2AA2 (SC22.5), 3RK1.07-...00-2AA2 (SC22.5)	22.5	12
3RQ1 coupling relays		
• 3RQ1.00-.EB00, -.EW00, -.GB00, -.GW00	17.5	16
• 3RQ1000-.HB00, -.HW00, -.LB00, -.LW00	22.5	12
3RQ2 coupling relays		
• 3RQ2000-..W0.	22.5	12
3RM1 motor starters		
• 3RM1.0-..AA.4	22.5	12
SIMOCODE pro S 3UF7 motor management and control devices		
• 3UF7020-1A.01-0, 3UF7600-1A.01-0	22.5	12
3RP25 electronic timing relays		
• 3RP2505-.A, 3RP2505-.C, 3RP251., 3RP2525-.A, 3RP2527, 3RP253., 3RP255.	17.5	16
• 3RP2505-.B, 3RP2505-.R, 3RP2525-.B, 3RP254., 3RP256., 3RP257.	22.5	12
3RS2 temperature monitoring relays		
• 3RS2500-1...0, 3RS2600-1...0, 3RS2800-1...0, 3RS2900-1...0	22.5	12
3RN2 thermistor motor protection relays		
• 3RN2000-.A, 3RN2010-.C	17.5	16
• 3RN201-.B, 3RN2013-.G, 3RN2023-.D	22.5	12
3SK safety relays		
• 3SK1120, 3SK1220	17.5	16
• 3SK1111, 3SK1112, 3SK1121, 3SK1122, 3SK1211, 3SK1230, 3SK2511	22.5	12

When ordering products in multi-unit packaging, the article number of the product concerned must be supplemented with **"-Z"** and, in addition, the order code **"X90"** must be specified.

Ordering examples:

- SC17.5F SlimLine Compact safety module
3RK1205-0BE00-2AA2-Z X90;
Order quantity 16 items →
Packed number of items 16
- SC22.5 analog SlimLine Compact module
3RK1207-0CE00-2AA2-Z X90;
Order quantity 12 items →
Packed number of items 12

Appendix

Logistics

SIRIUS ACT

Multi-unit packaging with order code X90

Pushbuttons and indicator lights	Multi-unit or quantity per pack X90
Complete units (3SU11)	20
Compact units (3SU12)	
• Acoustic signaling devices, pushbuttons with extended stroke, potentiometers	50
Actuating and signaling elements (3SU10)	
• Pushbuttons, illuminated pushbuttons, indicator lights	100
• Stop switches, twin pushbuttons, mushroom pushbuttons 30/40 mm, EMERGENCY STOP mushroom pushbuttons 30/40 mm, toggle switches, selector switches, key-operated switches, ID key-operated switches, coordinate switches	50
• Mushroom pushbuttons 60 mm, EMERGENCY STOP mushroom pushbuttons 60 mm	40
Holders without module (3SU15)	100
Modules for actuators and indicators (3SU14)	
• Contact modules	150
• LED modules	50
Enclosures (3SU18)	
• Empty plastic enclosures	
- 3SU1801-0AA00-0AA2, 3SU1801-0AA00-0AB1	24
- 3SU1801-0AA00-0AC2	18
Accessories (3SU19)	
• Sealing plugs, label holders, EMERGENCY STOP backing plates, labeling plates for potentiometers, EMERGENCY STOP labeling plates for enclosures without recesses and without inscription, single frames, dust caps for key-operated switches, adapters for mounting on DIN rails, protective collars for EMERGENCY STOP mushroom pushbuttons (40 mm, for 5 padlocks, yellow)	100
• Labeling plates	150

When ordering products in multi-unit packaging for devices from the SIRIUS ACT range, the article number of the product concerned must be supplemented with **"-Z"** and, in addition, the ordering code **"X90"** must be specified.

Ordering example:
3SU1000-0AB20-0AA0-Z X90;
Order quantity 100 items →
Packed number of items 100

Multi-unit packaging with order code X05

Pushbuttons and indicator lights	Multi-unit or quantity per pack X05
Holders without module (3SU15)	
• Plastic: 3SU1500-0AA10-0AA0	5
• Metal: 3SU1510-0AA10-0AA0	5
• Universal for plastic and metal: 3SU1550-0AA10-0AA0	5
Modules for actuators and indicators (3SU14)	
• Contact modules for front plate mounting	5
- Screw terminals: 3SU1400-1AA10-1BA0, 3SU1400-1AA10-1CA0	
- Spring-loaded terminals: 3SU1400-1AA10-3BA0, 3SU1400-1AA10-3CA0	
• LED modules for front plate mounting	5
- Screw terminals:	
3SU1401-1BB00-1AA0, 3SU1401-1BB20-1AA0, 3SU1401-1BB30-1AA0, 3SU1401-1BB40-1AA0, 3SU1401-1BB50-1AA0, 3SU1401-1BB60-1AA0	
- Spring-loaded terminals:	
3SU1401-1BB00-3AA0, 3SU1401-1BB20-3AA0, 3SU1401-1BB30-3AA0, 3SU1401-1BB40-3AA0, 3SU1401-1BB50-3AA0, 3SU1401-1BB60-3AA0	
• LED modules for base mounting	5
- Screw terminals:	
3SU1401-2BB00-1AA0, 3SU1401-2BB20-1AA0, 3SU1401-2BB30-1AA0, 3SU1401-2BB40-1AA0, 3SU1401-2BB50-1AA0, 3SU1401-2BB60-1AA0	
- Spring-loaded terminals:	
3SU1401-2BB00-3AA0, 3SU1401-2BB20-3AA0, 3SU1401-2BB30-3AA0, 3SU1401-2BB40-3AA0, 3SU1401-2BB50-3AA0, 3SU1401-2BB60-3AA0	

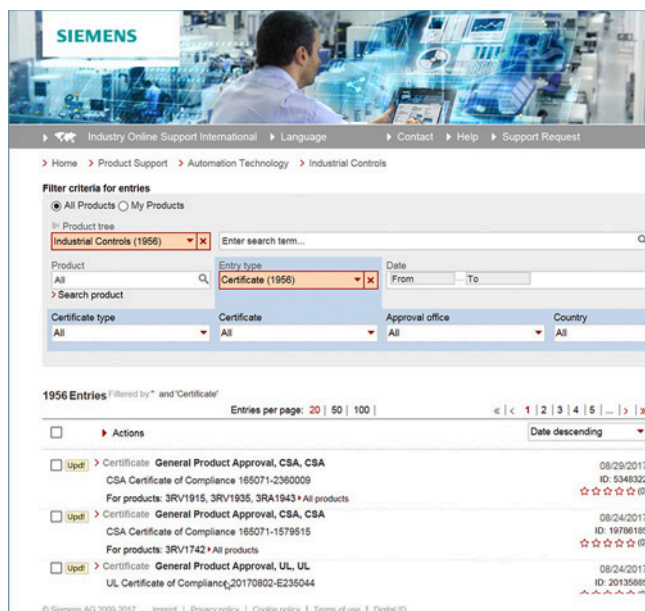
When ordering products in multi-unit packaging for devices from the SIRIUS ACT range, the article number of the product concerned must be supplemented with **"-Z"** and, in addition, the ordering code **"X05"**.

Ordering example:
3SU1500-0AA10-0AA0-Z X05;
Order quantity 5 items →
Packed number of items 5

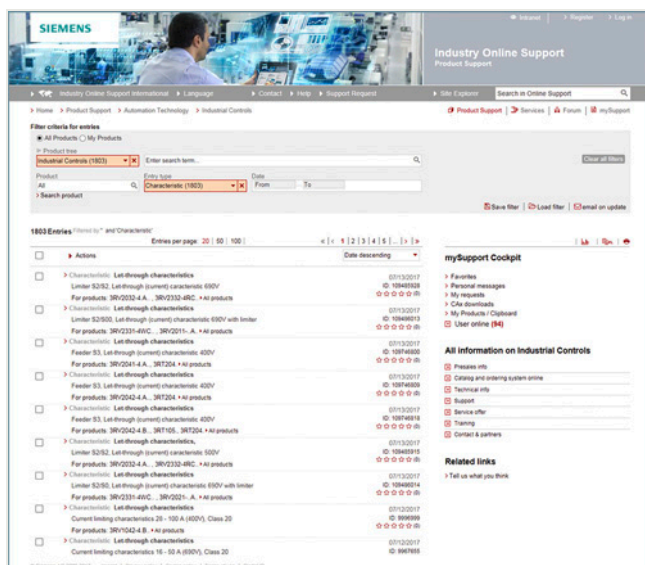
Approvals, test certificates, characteristic curves

An overview of the certificates available for Industrial Control products along with more technical documentation can be consulted daily on the internet at:

www.siemens.com/sirius/approvals



Product support: Approvals/certificates



Product support: Characteristics

Safety characteristics

In the following standards, the so-called B10 values for calculating the safety integrity or Safety Integrity Level (SIL) in functional safety at a high or continuous demand rate are required also for electromechanical switchgear:

- IEC 62061 "Safety of machines – Functional safety of safety-related electrical, electronic and programmable electronic control systems"
- ISO 13849-1 "Safety of machines – Safety-related components of controls – Part 1: General Principles"

Failure rates of electromechanical components are required for calculating the safety integrity or Safety Integrity Level (SIL) in functional safety:

- in the manufacturing industry at a high demand rate
- in the process industry at a low demand rate

Further requirements are laid down in IEC 61511-1 "Functional safety – Safety instrumented systems for the process industry sector – Part 1: Framework, definitions, system, hardware and software requirements".

The German versions of the above standards are:

- EN 62061
- EN ISO 13849
- EN 61511-1

The Safety Evaluation in the TIA Selection Tool assists in calculating the safety functions as verification for the machine documentation. It is available free of charge at www.siemens.com/safety-evaluation.

More information such as notes on trainings and Safety Consulting as well as application examples with calculations are available at www.siemens.com/safety-integrated.

Definitions

$\lambda(t) dt$ is the probability that a unit which has not failed by a certain time t will fail in the following interval $(t; t + dt)$. Failure rates have the dimension 1/time unit, e.g. 1/h. Failure rates for components are often specified in FIT (failures in time unit): 1 FIT equals 10^{-9} /h.

From the failure rate it is possible to derive a (mathematical) distribution function of the failure probability:

$F(t) = 1 - \exp(-\lambda t)$, with λ as constant failure rate

- The mean value of this exponential distribution is also referred to as:
 - Mean Time To Failure (MTTF) in the case of irreparable components; 63.2% of components fail by the MTTF.
 - Mean Operating Time Between Failures (MTBF) in the case of repairable components.
- $MTTF = 1/\lambda$
(MTTF is a statistical mean value but no guarantee for endurance).

Electromechanical components are often irreparable components. In general, the failure rate of monitored units changes with age.

The B10 value for devices subject to wear is expressed in number of operating cycles:

- It is the number of operating cycles after which 10% of the test specimens fail in the course of an endurance test (or: the number of operating cycles after which 10% of the devices have failed).

For low demand rates (mainly in the process industry), the failure rate and not the B10 value is used to determine the failure probability.

The safety characteristics of electromechanical SIRIUS products can be found at <https://support.industry.siemens.com/cs/www/en/view/109739348> or in the SIEMENS Industry Online Support Portal (www.siemens.com/online-support) under the Entry ID: 109739348.

Appendix

Standards and approvals

Standards

IEC	EN/EN IEC	Title
60947-1 60947-2 60947-3	60947-1 60947-2 60947-3	Low-voltage switchgear and controlgear: General rules • Circuit-breakers • Switches, disconnectors, switch-disconnectors and fuse-combination units
60947-4-1 60947-4-2 60947-4-3	60947-4-1 60947-4-2 60947-4-3	• Contactors and motor starters: Electromechanical contactors and motor starters • Contactors and motor starters: Semiconductor motor controllers and starters, soft starters • Contactors and motor starters: Semiconductor controllers and contactors for non-motor loads
60947-5-1 60947-5-2 60947-5-3	60947-5-1 60947-5-2 60947-5-3	• Control circuit devices and switching elements: Electromechanical control circuit devices • Control circuit devices and switching elements: Proximity switches • Control circuit devices and switching elements: Requirements for proximity devices with defined behavior under fault conditions
60947-5-5	60947-5-5	• Control circuit devices and switching elements: Electrical EMERGENCY STOP devices with mechanical latching function
60947-5-6 60947-5-7 60947-5-8 60947-5-9	60947-5-6 60947-5-7 60947-5-8 60947-5-9	• Control circuit devices and switching elements: DC interface for proximity sensors and switching amplifiers (NAMUR) • Control circuit devices and switching elements: Requirements for proximity devices with analog output • Control circuit devices and switching elements: Three-position enabling switches • Control circuit devices and switching elements: Flow rate switches
60947-6-1 60947-6-2	60947-6-1 60947-6-2	• Multiple function equipment - Transfer switching equipment • Multiple function equipment - Control and protective switching devices (or equipment) (CPS)
60947-7-1 60947-7-2 60947-7-3 60947-7-4 60947-7-5	60947-7-1 60947-7-2 60947-7-3 60947-7-4 --	• Ancillary equipment - Terminal blocks for copper conductors • Ancillary equipment - Protective conductor terminal blocks for copper conductors • Ancillary equipment - Safety requirements for fuse terminal blocks • Ancillary equipment - PCB terminal blocks for copper conductors • Ancillary equipment - Terminal blocks for aluminum conductors
60947-8	60947-8	• Control units for built-in thermal protection (PTC) for rotating electrical machines
60947-9-1	60947-9-1	• Low-voltage switchgear and controlgear - Active arc-fault mitigation systems - Arc quenching devices
62026-2	62026-2	• Network control devices (CDIs): Actuator sensor interface
60269-1 60269-4	60269-1 60269-4	Low-voltage fuses: General requirements Low-voltage fuses: Supplementary requirements for fuse-links for the protection of semiconductor devices
60050-441	--	International Electrotechnical Vocabulary. Switchgear, controlgear and fuses
61439-1 61439-2 61439-3	61439-1 61439-2 61439-3	Low-voltage switchgear and controlgear assemblies: General rules Low-voltage switchgear and controlgear assemblies: Power switchgear and controlgear assemblies Low-voltage switchgear and controlgear assemblies: Distribution boards intended to be operated by ordinary persons (DBO)
61439-4	61439-4	Low-voltage switchgear and controlgear assemblies: Particular requirements for assemblies for construction sites (ACS)
61439-5 61439-6 61439-7	61439-5 61439-6 --	Low-voltage switchgear and controlgear assemblies: Assemblies for power distribution in public networks Low-voltage switchgear and controlgear assemblies: Busbar trunking systems (busways) Low-voltage switchgear and controlgear assemblies: Assemblies for specific applications such as marinas, camping sites, market squares, electric vehicle charging stations
--	50274	Low-voltage switchgear and controlgear assemblies: Protection against electric shock - Protection against unintentional direct contact with hazardous live parts
61140	61140	Low-voltage switchgear and controlgear assemblies: Protection against electric shock - Common aspects for installation and equipment
60664-1	60664-1	Insulation coordination for electrical equipment in low-voltage systems; Principles, requirements and tests
60204-1 60079-0 60079-14	60204-1 60079-0 60079-14	Electrical equipment of machines: General requirements Hazardous areas - Equipment - General requirements Hazardous areas - Electrical installations design, selection and erection
61810-1 61812-1	61810-1 61812-1	Electromechanical elementary relays: General requirements and safety requirements Time relays for industrial and residential use: Requirements and tests
60999-1 60999-2	60999-1 60999-2	Connecting devices - Electrical copper conductors - Safety requirements for screw-type and screwless-type clamping units: General requirements and particular requirements for clamping units for conductors from 0.2 mm ² up to 35 mm ² (included) Connecting devices - Electrical copper conductors - Safety requirements for screw-type and screwless-type clamping units: Particular requirements for clamping units for conductors above 35 mm ² up to 300 mm ² (included)
IEC/TR 61000-4-1	61000-4-1	Electromagnetic compatibility (EMC); Test and measuring techniques; Overview of IEC 61000-4 series
61000-6-2 61000-6-3	61000-6-2 61000-6-3	Electromagnetic compatibility (EMC); Generic standards - Immunity for industrial environments Electromagnetic compatibility (EMC); Generic standards - Emission standard for residential, commercial and light-industrial environments
61000-6-4	61000-6-4	Electromagnetic compatibility (EMC); Generic standards - Emission standard for industrial environments
61869-1	61869-1	Instrument transformers: General requirements
61869-2	61869-2	Instrument transformers: Additional requirements for current transformers

Standards and approvals

UL	CSA C22.2	ASME	JIS	Title
508	--	--	--	Industrial control equipment
60947-1	No. 60947-1	--	--	Low-voltage switchgear and controlgear: General rules
60947-4-1	No. 60947-4-1	--	--	Low-voltage switchgear and controlgear: Contactor and motor starters - Electromechanical contactors and motor starters
60947-4-2	No. 60947-4-2	--	--	Low-voltage switchgear and controlgear: Contactors and motor-starters - AC semiconductor motor controllers and starters
60947-5-1	No. 60947-5-1	--	--	Low-voltage switchgear and controlgear: Control circuit devices and switching elements - Electromechanical control circuit devices
60947-5-5	60947-5-5	--	--	Low-voltage switchgear and controlgear: Control circuit devices and switching elements - Electrical emergency stop device with mechanical latching function
489	No. 5	--	--	Molded case circuit breakers, molded case switches, and circuit breaker enclosures
1012	--	--	--	Power units other than CLASS 2
1059	--	--	--	Terminal blocks
486A-486B	No. 65	--	--	Wire connectors
486E	--	--	--	Equipment wiring terminals for use with aluminum and/or copper conductors
50	No. 94.1	--	--	Enclosures for electrical equipment - Non-environmental considerations
50E	No. 94.2	--	--	Enclosures for electrical equipment - Environmental considerations
--	No. 14	--	--	Industrial control equipment
--	No. 107.1	--	--	Power conversion equipment
--	--	A17.5/ CSA B 44.1	--	Elevator and escalator electrical equipment
--	--	--	C 8201-4-1	Low-voltage switchgear and controlgear; Contactors and motor-starters

Approval requirements valid in different countries

Siemens low-voltage switchgear and controlgear are designed, manufactured and tested according to the relevant German standards (DIN and VDE), IEC publications and European standards (EN) as well as CSA and UL standards. The standards assigned to the single devices are stated in the relevant parts of this catalog.

As far as is economically viable, the requirements of the various standards valid in other countries are also taken into account in the design of the equipment.

In some countries an approval is required for certain low-voltage switchgear and controlgear components (see table below).

Depending on the market requirements, these components have been submitted for approval to the authorized testing institutes.

In some cases, CSA for Canada and UL for the USA only approve special switchgear versions. Such special versions are listed separately from the standard versions in the individual parts of this catalog.





For this equipment, partial limitations of the maximum permissible voltages, currents and ratings can be imposed, or special approval and, in some cases, special identification is required.

For use on board ship, the specifications of the marine classification societies must also be observed (see table on page 16/12). In some cases, they require type tests of the components to be approved.

The Chinese certification system has changed. As of November 1, 2020, the self-declaration by Siemens (Self-Declaration of Compliance (SDOC)) forms the basis of CCC and the import to China. The CCC scope, product labeling, certification procedures, implementation rules in manufacturing and regulations regarding the import to China have remained unchanged. All CCC certificates issued by CQC have been transferred to SDOCs and all CCC certificates issued by CQC are invalid as of November 1, 2020.

UKCA: As of January 1, 2023, all devices to be marketed in Great Britain require a manufacturer's declaration (UK Declaration of Conformity) and must be supplied with a UKCA mark. The declaration is based on UK regulations and the underlying British standards (BS). Alternatively, EN standards can also be applied. Otherwise, the same requirements apply as for the EU Declaration of Conformity.

Testing bodies, approval identification and approval requirements

Country	Canada	USA	China	Armenia, Belarus, Kazakhstan Kirgizstan, Russia
Government-appointed or private, officially recognized testing bodies	CSA UL (USA)	UL	Self-Declaration of Com- pliance (Siemens)	Official national regulation/TR
Mark of conformity				
Approval requirement	+	+	+	+
Remarks	--	--	--	Eurasian customs union

For more information about the approval marks, see page 16/14.

Appendix

Standards and approvals

Marine classification societies

Country	Germany Norway	Great Britain	France	CIS	Italy	Poland	USA
Name	DNV	Lloyds Register of Shipping	Bureau Veritas	Russian Maritime Register of Shipping	Registro Italiano Navale	Polski Rejestr Statków	American Bureau of Shipping
Codes	DNV	LR	BV	RS	RINA	PRS	ABS

CE marking

Manufacturers of products which fall within the subject area to which EU directives apply must identify their products, operating instructions or packaging with a CE mark of conformity.

By attaching the CE marking, the manufacturer confirms that the product conforms to the relevant basic requirements of all directives applicable to the product. The mark of conformity is a mandatory requirement for putting products into circulation throughout the EU.

All the products in this catalog are in conformance with the relevant specific EU directives and bear the CE mark of conformity **CE**.

- Low-voltage directive
- EMC directive
- Machinery directive
- ATEX directive
- RED directive
- RoHS directive

Accident prevention

Test certificates and approvals from DGUV, SUVA (Swiss institute for accident prevention), TÜV or VDE are available for some devices in safety control systems. For details, [see the respective product descriptions](#).

Ex protection certificates for SIRIUS controls

Controls that are installed in a potentially explosive atmosphere or motor protection devices that protect a motor installed in a potentially explosive atmosphere against overloading or a pump in said atmosphere from dry running must comply with certain special requirements. These requirements are laid down in the following standards:

- EN 50495
- EN IEC 60079-0
- EN 60079-1
- EN 60079-7
- EN 60079-11
- EN 60079-14
- EN 60079-17
- EN 60079-31
- EN IEC 60947-1
- EN IEC 60947-4-1
- EN 60947-4-2
- EN 60947-5-1
- EN 60947-8
- EN ISO/IEC 80079-34
- EN ISO 80079-36
- EN ISO 80079-37

Certification

Controls and motor protection devices that are brought into circulation within the member states of the EU in accordance with EU directive 2014/34/EU must have been constructed and tested according to the above-mentioned standards and must have a declaration of conformity from the manufacturer based on a prototype test certificate.

The quality management (QM) system of the manufacturer is subject to certain requirements and a "QM certificate" must be obtained for the manufacturer from a recognized authority.

Certification of the QM system

A certificate of approval for quality assurance production has been issued by DEKRA Testing and Certification GmbH¹⁾ under the number BVS 20 ATEX ZQS/E111 according to Directive 2014/34/EU. The quality management (QM) system is also checked within the scope of the IEC Ex Scheme. Conformity with the requirements is confirmed using document DE/BVS/QAR15.0002/08.

These certificates are valid for equipment groups I and II and categories M2 and 2: Safety and control devices for electrical equipment.

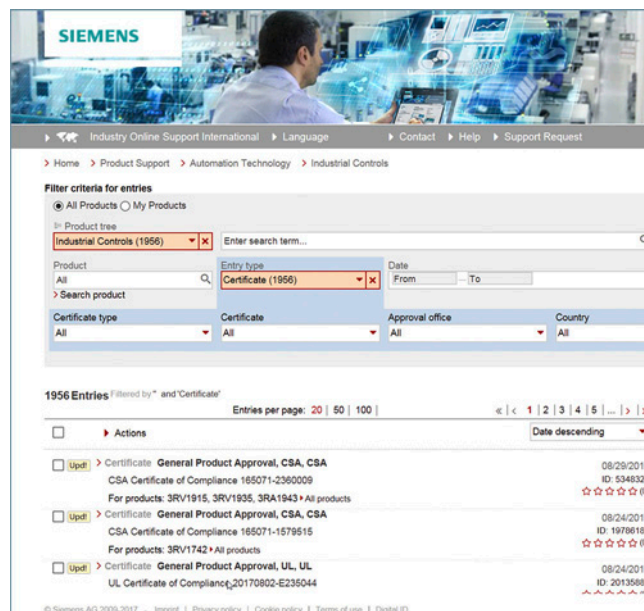
Certificates

Declarations of conformity and prototype test certificates are available at www.siemens.com/online-support for viewing and downloading. As far as explosion protection is concerned, these are available for the following products:

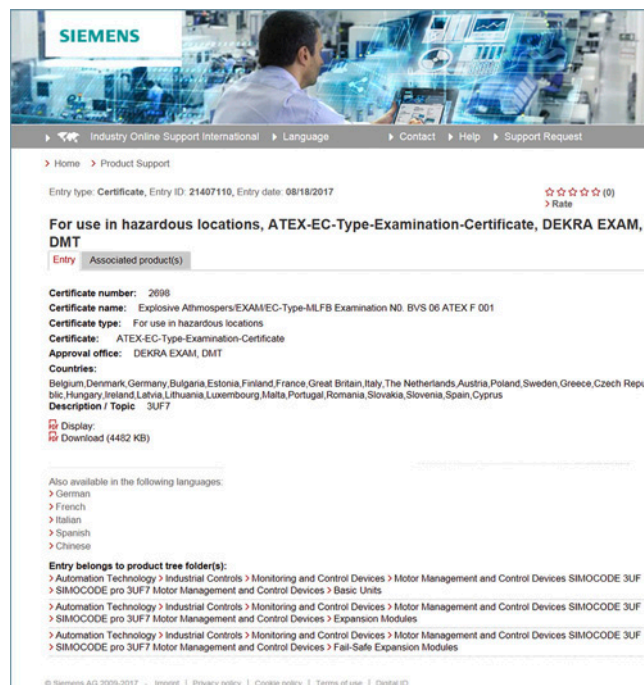
- 3RB, 3RK, 3RM, 3RN, 3RU, 3RV, 3RW, 3UF motor protection devices
- 3RS2 temperature monitoring relays
- 3SU1 LED modules

You can find more information about industrial controls for applications in explosion-protected areas at www.siemens.com/sirius/atex.

¹⁾ DEKRA Testing and Certification GmbH
The certification authority of "DEKRA Testing and Certification GmbH" with authority number 0158 according to Article 13 of Directive 2014/34/EU of the European Parliament and Council certifies that Siemens Amberg, Cham, Suzhou and Trutnov maintains a quality assurance system for production that satisfies Appendices IV and VII of this Directive.



Selection box



Description of certificate with view and download option

Identifying markings

All equipment must be marked according to the ATEX guideline. The ATEX identification code contains the equipment group, the approved environment, the number of the certification authority and other technical data required for explosion protection.

Appendix

Standards and approvals

Certificate of the AS-International Association for AS-Interface products

AS-Interface products are tested and certified by the AS-International Association. The products have been tested in an accredited test laboratory according to testing guidelines.

Special standards for the USA and Canada

In the USA and Canada, for machine tools and processing machines in particular, supply lines are laid using rubber insulated cable enclosed in heavy-duty steel piping similar to that used for gas or water pipe systems.





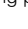
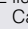

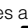

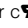
The tubing system must be completely watertight and electrically conductive (especially sleeving and elbows). Since the tubing system can also be used for grounding, the threaded cable entries of enclosed units must be fitted with PG or metric thread metal adapters for the tube thread. The necessary adapters are specified for the switchgear as accessories; they should be ordered separately unless otherwise specified.

Low-voltage switchgear and controlgear for auxiliary circuits (e.g. contactor relays, commanding and signaling devices and auxiliary switches/auxiliary contacts in general) are generally only approved by CSA and UL for **"Heavy Duty"** or **"Standard Duty"** and are identified either with these specifications in addition to the maximum permissible voltage or by using an abbreviation.

The abbreviations are harmonized with IEC 60947-5-1 Annex 1 Table A.1 and correspond to the stated utilization categories.

For various switching devices detailed in the catalog, a note has been included to the effect that, above a certain voltage, the auxiliary switches/auxiliary contacts can only be used if they have the same polarity. This means that the input terminals can only be connected to the same pole of the control voltage, e.g. "600 V AC above 300 V AC same polarity".

Distinguishing features of UL approvals (for USA and Canada)

Recognized Component	Listed Product
Devices are identified on the rating plate using the "UL recognition mark": USA:  c  US Canada: c   US	Devices are identified using the "UL listing mark" on the rating plate e.g. USA:  LISTED XXX Canada: c  LISTED XXX IND. CONT. EQ. IND. CONT. EQ. (XXX stands for: UL Code Classification Number)
Devices are approved as modules for "factory wiring" or other conditions of acceptability, i.e.: As devices for installation in control systems, which are selected, installed, wired and tested entirely by trained personnel in factories, workshops or elsewhere, according to the operating conditions .	Devices are approved for "field wiring", i.e.: <ul style="list-style-type: none"> As devices for installation in control systems, which are completely wired by trained personnel in factories, workshops or elsewhere. As single devices for sale in retail outlets in the USA/Canada.
If devices are  or c  approved as "listed products", they are also approved as  or c  "recognized components".	

For more information about UL and CSA, [see page 16/11](#).

Special standards for Russia, Australia and China

EAC approval for Armenia, Belarus, Kazakhstan, Kirgizstan, Russia



EAC mark

Since February 15, 2013, Russia, Kazakhstan, Belarus and other countries have been united in the Eurasian EAC customs union.

All devices delivered to the customs union must have these customs certifications.

RCM approval for Australia



RCM mark

The RCM mark is required for marketing Siemens electronic devices in Australia. Electronic devices must provide proof of EMC clearance in Australia, similar to the CE mark of conformity laid down by the EMC directive applicable in the EU and bear the "RCM" mark.

Quality management

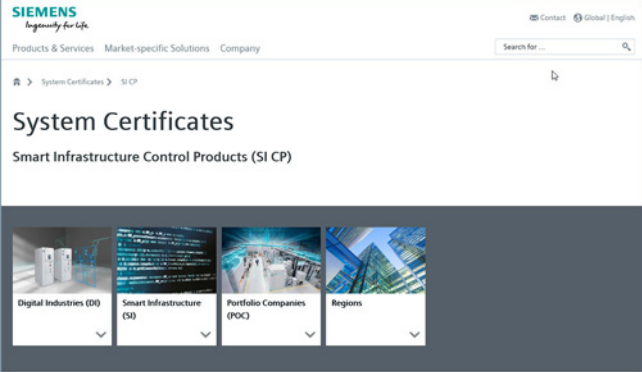
The quality management system of our "Electrical Products" Business Unit in the "Smart Infrastructure" business complies with the international standard EN ISO 9001.

The products and systems described in this catalog are developed, manufactured and sold under application of a certified quality management system according to ISO 9001.

Certificates

For information about available certifications of the quality management system for Industrial Controls products, please visit website address:

<https://new.siemens.com/global/en/general/system-certificates/si-ep.html>

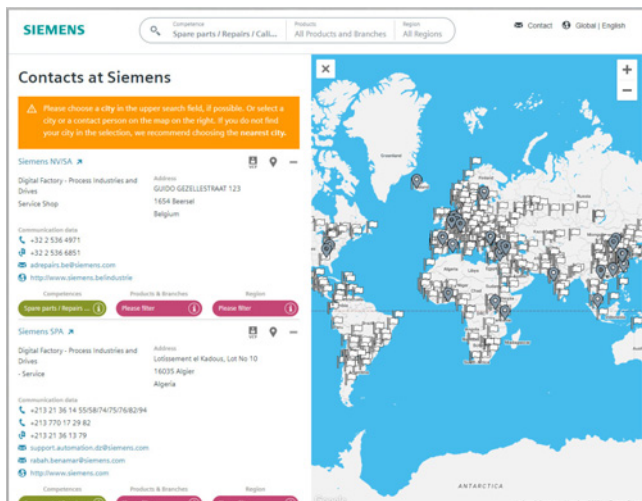


System	Certifier	Basis	Valid until	Location	Language	Former BU
Quality Management	DQS	ISO 9001	2020-08-11	Amberg Cham Furth	DE EN	DF CP
Quality Management	TSE	ISO 9001	2021-05-21	Geisze	EN	DF CP
Quality Management	DNV	ISO 9001	2020-12-13	Guadalajara	EN ES	DF CP
Quality Management	AIB Vincotte	ISO 9001	2021-03-09	Huizingen	EN	DF CP
Quality Management	BSI	ISO 9001	2021-07-29	Kahwa	EN	DF CP
Quality Management	TUV Rheinland	ISO 9001	2019-05-31	Shanghai	EN CN	DF CP
Quality Management	TUV Rheinland	ISO 9001	2020-06-11	Suzhou	EN CN	DF CP
Quality Management	TUV Rheinland	ISO 9001	2021-10-30	Tiantai	EN CN	DF CP
Quality Management	DQS	ISO 9001	2020-07-20	Trutnov	DE EN CZ	DF CP
Environment Management	DQS	ISO 14001	2021-09-14	Amberg Cham	DE EN	DF CP
Environment Management	TUV Rheinland	ISO 14001	2020-05-25	Suzhou Tiantai	EN CN	DF CP
Environment Management	DQS	ISO 14001	2021-09-14	Furth	DE EN	DF CP

Appendix

Partners at Siemens

Overview



At your service locally, around the globe for consulting, sales, training, service, support, spare parts on the entire portfolio of Siemens.

Your partner can be found in our Personal Contacts Database at: www.siemens.com/automation-contact

You start by selecting

- the required competence,
- products and branches,
- a country and a city

or by a

- location search or free text search.

Overview

Siemens Solution and Approved Partner – Partners for your success



Highest competence in automation and drive technology

Siemens works closely together with selected partner companies around the world in order to ensure that customer requirements for all aspects of automation and drives are fulfilled as best as possible – wherever you are, and whatever the time.

We place great value on our customers acting in accordance with the same ideals which characterize Siemens as a whole: Competence, professionalism and quality. That is why continuous development through qualification and certification measures in line with global standards is a central aspect of our Partner Program. This means that with our partners, you benefit from the same high quality standards all over the world. The partner emblem is the symbol for tried and tested quality.

The partner network for industry

The Siemens Partner Program offers you expertise and experience close at hand.

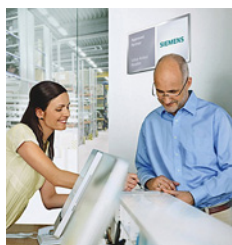
Within our global network, we distinguish between Solution Partners and Approved Partners. We currently work with more than 1,500 Solution Partners around the world. Our network of over 150 Approved Partners continues to grow. In more than 80 countries worldwide.

Siemens Solution Partner – Automation Drives



At present we are working with more than 1,500 **Solution Partners** worldwide. They are characterized by extensive application, system and sector knowledge, as well as proven project experience, and are able to implement future-proof tailored solutions of the highest quality, based on our product and system portfolio.

Siemens Approved Partner – Value Added Reseller



With their detailed technical knowledge, **Siemens Approved Partners – Value Added Resellers** offer a combination of products and services that range from specialist technologies and customized modifications to the provision of high-quality system and product packages. They also provide qualified technical support and assistance.

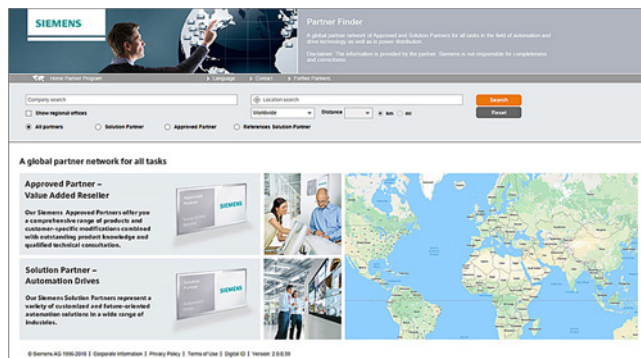
Siemens Approved Partner – Industry Services



Siemens Approved Partner – Industry Services put their unique expertise entirely at the service of enhancing your productivity and can be instrumental in ensuring the availability of your plants.

Partner Finder

The ideal partner for your task is just a mouse click away!



In the Siemens global Solution Partner Program, customers are certain to find the optimum partner for their specific requirements – with no great effort. The Partner Finder is basically a comprehensive database that showcases the profiles of all our partners.

Easy selection:

Set filters in the search screen form according to the criteria that are relevant to you. You can also directly enter the name of an existing partner.

Skills at a glance:

Gain a quick insight into the specific competencies of any particular partner with the reference reports.

Direct contact option:

Use our electronic query form:

www.siemens.com/partnerfinder

Additional information of the Siemens Partners for industry is available online at:

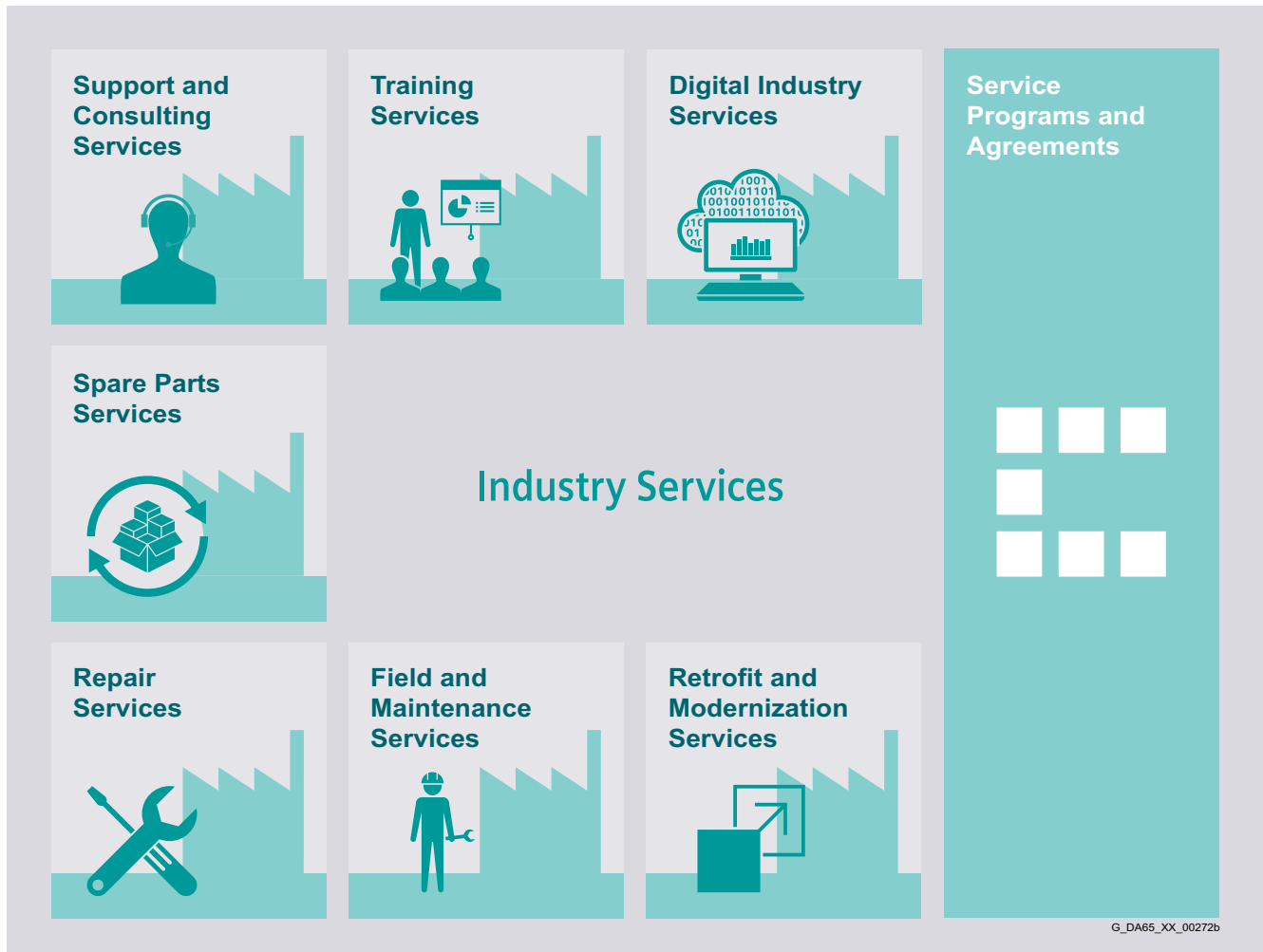
www.siemens.com/partnerprogram

Appendix

External partners

Our partner companies – your partners

- **AXELENT GmbH**
Internet: www.axelent.de
- **Brühl Safety GmbH**
Internet: www.bruehl-safety.com
- **Conta-Clip Verbindungstechnik GMBH**
Internet: wwwConta-clip.de
- **EPCOS AG**
A TDK Group Company
Internet: www.epcos.de
- **EPHY-Mess**
Gesellschaft für Elektro-Physikalische Messgeräte mbH
Internet: www.ephy-mess.de
- **FESTO AG & Co. KG**
Internet: www.festo.de
- **GMC-I Messtechnik GmbH**
Internet: www.gossenmetrawatt.com
- **Harting Customised Solutions GmbH & Co. KG**
Internet: www.Harting.com/solution-partner
- **Jacob GmbH**
Elektrotechnische Fabrik
Email: jacob@jacob-gmbh.de
- **KnorrTec**
Internet: www.knorrtec.de
- **U. I. Lapp GmbH**
Email: info@lappkabel.de
Internet: www.lappkabel.de
- **Murrplastik Systemtechnik GmbH**
Internet: www.murrplastik.de
- **Wieland Electric GmbH**
Email: info@wieland-electric.com

Overview

Keep your business running and shaping your digital future – with Industry Services

Optimizing the productivity of your equipment and operations can be a challenge, especially with constantly changing market conditions. Working with our service experts makes it easier. We understand your industry's unique processes and provide the services needed so that you can better achieve your business goals.

You can count on us to maximize your uptime and minimize your downtime, increasing your operations' productivity and reliability. When your operations have to be changed quickly to meet a new demand or business opportunity, our services give you the flexibility to adapt. Of course, we take care that your production is protected against cyber threats. We assist in keeping your operations as energy and resource efficient as possible and reducing your total cost of ownership. As a trendsetter, we ensure that you can capitalize on the opportunities of digitalization and by applying data analytics to enhance decision making: You can be sure that your plant reaches its full potential and retains this over the longer lifespan.

You can rely on our highly dedicated team of engineers, technicians and specialists to deliver the services you need – safely, professionally and in compliance with all regulations. We are there for you, where you need us, when you need us.

www.siemens.com/industrieservices

Appendix

Industry Services

Industry Services – Portfolio

Overview (continued)

Digital Industry Services



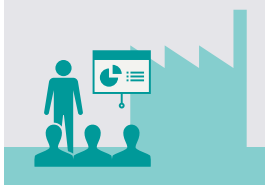
Digital Industry Services make your industrial processes transparent to gain improvements in productivity, asset availability, and energy efficiency.

Production data is generated, filtered and translated with intelligent analytics to enhance decision-making.

This is done whilst taking data security into consideration and with continuous protection against cyber-attack threats.

www.siemens.com/global/en/products/services/industry/digital-industry-services.html

Training Services



From the basics and advanced to specialist skills, SITRAIN courses provide expertise right from the manufacturer – and encompass the entire spectrum of Siemens products and systems for the industry.

Worldwide, SITRAIN courses are available wherever you need a training course in more than 170 locations in over 60 countries.

<https://support.industry.siemens.com/cs/ww/en/sc/2226>

Support and Consulting Services



Industry Online Support site for comprehensive information, application examples, FAQs and support requests.

Technical and Engineering Support for advice and answers for all inquiries about functionality, handling, and fault clearance. The Service Card as prepaid support for value added services such as Priority Call Back or Extended Support offers the clear advantage of quick and easy purchasing.

Information & Consulting Services, e.g. SIMATIC System Audit; clarity about the state and service capability of your automation system or Lifecycle Information Services; transparency on the lifecycle of the products in your plants.

<https://support.industry.siemens.com/cs/ww/en/sc/2235>

Spare Parts Services



Spare Parts Services are available worldwide for smooth and fast supply of spare parts – and thus optimal plant availability. Genuine spare parts are available for up to ten years. Logistic experts take care of procurement, transport, custom clearance, storage and order management. Reliable logistics processes ensure that components reach their destination as needed.

Since not all spare parts can be kept in stock at all times, Siemens offers a preventive measure for spare parts provisioning on the customer's premises with optimized **Spare Parts Packages** for individual products, custom-assembled drive components and entire integrated drive trains – including risk consulting.

Asset Optimization Services help you design a strategy for parts supply where your investment and carrying costs are reduced and the risk of obsolescence is avoided.

<https://support.industry.siemens.com/cs/ww/en/sc/2110>

Overview (continued)

Repair Services


Repair Services are offered on-site and in regional repair centers for fast restoration of faulty devices' functionality.

Also available are extended repair services, which include additional diagnostic and repair measures, as well as emergency services.

<https://support.industry.siemens.com/cs/ww/en/sc/2154>

Retrofit and Modernization Services


Provide a cost-effective solution for the expansion of entire plants, optimization of systems or upgrading existing products to the latest technology and software, e.g. migration services for automation systems.

Service experts support projects from planning through commissioning and, if desired over the entire extended lifespan, e.g. Retrofit for Integrated Drive Systems for an extended lifetime of your machines and plants.

<https://support.industry.siemens.com/cs/ww/en/sc/2286>

Field and Maintenance Services


Siemens specialists are available globally to provide expert field and maintenance services, including commissioning, functional testing, preventive maintenance and fault clearance.

All services can be included in customized service agreements with defined reaction times or fixed maintenance intervals.

<https://support.industry.siemens.com/cs/ww/en/sc/2265>

Service Programs and Agreements


A technical Service Program or Agreement enables you to easily bundle a wide range of services into a single annual or multi-year agreement.

You pick the services you need to match your unique requirements or fill gaps in your organization's maintenance capabilities.

Programs and agreements can be customized as KPI-based and/or performance-based contracts.

<https://support.industry.siemens.com/cs/ww/en/sc/2275>

Appendix

Industry Services

Online Support

Overview

Online Support – fast, intuitive, whenever you want, wherever you need



Web
www.siemens.com/online-support

App

GET IT ON Google Play | GET IT ON App Store | Microsoft

Scan the QR code for information on our Online Support app.

 **FAQ / Application examples**
Information about industrial products, programming and configuration as well as application examples

 **Technical information**
Videos, documentation, manuals, updates, product notes, compatibility tool, certificates, planning data such as dimensional drawings, product data, 3D models

 **Forum**
Exchange information and experience with other users and experts

Online Support for Siemens Industry Products

Siemens Industry and Online Support with some 1.7 million visitors per month is one of the most popular web services provided by Siemens. It is the central access point for comprehensive technical know-how about products, systems and services for automation and drives applications as well as for process industries.

In connection with the challenges and opportunities related to digitalization you can look forward to continued support with innovative offerings.

Overview

Software types

Software requiring a license is categorized into types. The following software types have been defined:

- Engineering software
- Runtime software

Engineering software

This includes all software products for creating (engineering) user software, e.g. for configuring, programming, parameterizing, testing, commissioning or servicing.

Data generated with engineering software and executable programs can be duplicated for your own use or for use by third parties free-of-charge.

Runtime software

This includes all software products required for plant/machine operation, e.g. operating system, basic system, system expansions, drivers, etc.

The duplication of the runtime software and executable programs created with the runtime software for your own use or for use by third-parties is subject to a charge.

You can find information about license fees according to use in the ordering data (e.g. in the catalog). Examples of categories of use include per CPU, per installation, per channel, per instance, per axis, per control loop, per variable, etc.

Information about extended rights of use for parameterization/configuration tools supplied as integral components of the scope of supply can be found in the readme file supplied with the relevant product(s).

License types

Siemens Industry Automation & Drive Technologies offers various types of software license:

- Floating license
- Single license
- Rental license
- Rental floating license
- Trial license
- Demo license
- Demo floating license

Floating license

The software may be installed for internal use on any number of devices by the licensee. Only the concurrent user is licensed. The concurrent user is the person using the program. Use begins when the software is started. A license is required for each concurrent user.

Single license

Unlike the floating license, a single license permits only one installation of the software per license.

The type of use licensed is specified in the ordering data and in the Certificate of License (CoL). Types of use include for example per instance, per axis, per channel, etc.

One single license is required for each type of use defined.

Rental license

A rental license supports the "sporadic use" of engineering software. Once the license key has been installed, the software can be used for a specific period of time (the operating hours do not have to be consecutive).

One license is required for each installation of the software.

Rental floating license

The rental floating license corresponds to the rental license, except that a license is not required for each installation of the software. Rather, one license is required per object (for example, user or device).

Trial license

A trial license supports "short-term use" of the software in a non-productive context, e.g. for testing and evaluation purposes. It can be transferred to another license.

Demo license

The demo license support the "sporadic use" of engineering software in a non-productive context, for example, use for testing and evaluation purposes. It can be transferred to another license. After the installation of the license key, the software can be operated for a specific period of time, whereby usage can be interrupted as often as required.

One license is required per installation of the software.

Demo floating license

The demo floating license corresponds to the demo license, except that a license is not required for each installation of the software. Rather, one license is required per object (for example, user or device).

Certificate of License (CoL)

The CoL is the licensee's proof that the use of the software has been licensed by Siemens. A CoL is required for every type of use and must be kept in a safe place.

Downgrading

The licensee is permitted to use the software or an earlier version/release of the software, provided that the licensee owns such a version/release and its use is technically feasible.

Delivery versions

Software is constantly being updated.

The following delivery versions

- PowerPack
- Upgrade

can be used to access updates.

Existing bug fixes are supplied with the ServicePack version.

PowerPack

PowerPacks can be used to upgrade to more powerful software. The licensee receives a new license agreement and CoL (Certificate of License) with the PowerPack. This CoL, together with the CoL for the original product, proves that the new software is licensed.

A separate PowerPack must be purchased for each original license of the software to be replaced.

Upgrade

An upgrade permits the use of a new version of the software on the condition that a license for a previous version of the product is already held.

The licensee receives a new license agreement and CoL with the upgrade. This CoL, together with the CoL for the previous product, proves that the new version is licensed.

A separate upgrade must be purchased for each original license of the software to be upgraded.

Appendix

Software licenses

Overview (continued)

ServicePack

ServicePacks are used to debug existing products. ServicePacks may be duplicated for use as prescribed according to the number of existing original licenses.

License key

Siemens Industry Automation & Drive Technologies supplies software products with and without license keys.

The license key serves as an electronic license stamp and is also the "switch" for activating the software (floating license, rental license, etc.).

The complete installation of software products requiring license keys includes the program to be licensed (the software) and the license key (which represents the license).

Software Update Service (SUS)

As part of the SUS contract, all software updates for the respective product are made available to you free of charge for a period of one year from the invoice date. The contract will automatically be extended for one year if it is not canceled three months before it expires.

The possession of the current version of the respective software is a basic condition for entering into an SUS contract.

You can download explanations concerning license conditions from https://mall.industry.siemens.com/legal/ww/en/terms_of_trade_en.pdf

1. General Provisions

By using this catalog you can purchase products (hardware, software and services) described therein from Siemens Aktiengesellschaft subject to the following Terms and Conditions of Sale and Delivery (hereinafter referred to as "T&C"). Please note that the scope, the quality and the conditions for supplies and services, including software products, by any Siemens entity having a registered office outside Germany, shall be subject exclusively to the General Terms and Conditions of the respective Siemens entity. The following T&C apply exclusively for orders placed with Siemens Aktiengesellschaft, Germany.

1.1 For customers with a seat or registered office in European Union

For customers with a seat or registered office in European Union, the following terms and conditions apply subordinate to T&C:

- for products, which include specific terms and conditions in the description text, these specific terms and conditions shall apply and subordinate thereto,
- for stand-alone software products and software products forming a part of a product or project, the "General License Conditions for Software Products for Automation and Drives for Customers with a Seat or registered Office in Germany"¹⁾ and/or
- for consulting services the "Allgemeine Geschäftsbedingungen für Beratungsleistungen der Division DF – Deutschland" (available only in German) and/or
- for other services, the „Supplementary Terms and Conditions for Services ("BL")"¹⁾ and/or
- for other supplies the "General Conditions for the Supply of Products and Services of the Electrical and Electronics Industry"¹⁾.

In case such supplies should contain Open Source Software, the conditions of which shall prevail over the "General Conditions for the Supply of Products and Services of the Electrical and Electronics Industry"¹⁾, a notice will be contained in the scope of delivery in which the applicable conditions for Open Source Software are specified. This shall apply mutatis mutandis for notices referring to other third party software components.

1.2 For customers with a seat or registered office outside European Union

For customers with a seat or registered office outside European Union, the following terms and conditions apply subordinate to T&C:

- for products, which include specific terms and conditions in the description text, these specific terms and conditions shall apply and subordinate thereto,
- for consulting services the "Standard Terms and Conditions for Consulting Services of the Division DF for Customers with a Seat or Registered Office Outside of Germany"¹⁾ and/or
- for other services the "International Terms & Conditions for Services"¹⁾ supplemented by "Software Licensing Conditions"¹⁾ and/or
- for other supplies of hard- and software the "International Terms & Conditions for Products"¹⁾ supplemented by "Software Licensing Conditions"¹⁾

1.3 For customers with master or framework agreement

To the extent our supplies and/or services offered are covered by an existing master or framework agreement, the terms and conditions of that agreement shall apply instead of T&C.

2. Prices

The prices are in € (Euro) ex point of delivery, exclusive of packaging.

The sales tax (value added tax) is not included in the prices. It shall be charged separately at the respective rate according to the applicable statutory legal regulations.

Prices are subject to change without prior notice. We will charge the prices valid at the time of delivery.

To compensate for variations in the price of raw materials (e.g. silver, copper, aluminum, lead, gold, dysprosium and neodym), surcharges are calculated on a daily basis using the so-called metal factor for products containing these raw materials.

A surcharge for the respective raw material is calculated as a supplement to the price of a product if the basic official price of the raw material in question is exceeded.

The metal factor of a product indicates the basic official price (for those raw materials concerned) as of which the surcharges on the price of the product are applied, and with what method of calculation.

An exact explanation of the metal factor can be downloaded at:

https://mall.industry.siemens.com/legal/ww/en/terms_of_trade_en.pdf

To calculate the surcharge (except in the cases of dysprosium and neodym), the official price from the day prior to that on which the order was received or the release order was effected is used.

To calculate the surcharge applicable to dysprosium and neodym ("rare earths"), the corresponding three-month basic average price in the quarter prior to that in which the order was received or the release order was effected is used with a one-month buffer (details on the calculation can be found in the explanation of the metal factor).

3. Additional Terms and Conditions

The dimensions are in mm. In Germany, according to the German law on units in measuring technology, data in inches apply only to devices for export.

Illustrations are not binding.

Insofar as there are no remarks on the individual pages of this catalog – especially with regard to data, dimensions and weights given – these are subject to change without prior notice.

¹⁾ The text of the Terms and Conditions of Siemens AG can be downloaded at
https://mall.industry.siemens.com/legal/ww/en/terms_of_trade_en.pdf

Appendix

Conditions of sale and delivery

4. Export Regulations

We shall not be obligated to fulfill any agreement if such fulfillment is prevented by any impediments arising out of national or international foreign trade or customs requirements or any embargoes and/or other sanctions.

Export may be subject to license. We shall indicate in the delivery details whether licenses are required under German, European and US export lists.

Our products are controlled by the U.S. Government (when labeled with "ECCN" unequal "N") and authorized for export only to the country of ultimate destination for use by the ultimate consignee or end-user(s) herein identified. They may not be resold, transferred, or otherwise disposed of, to any other country or to any person other than the authorized ultimate consignee or end-user(s), either in their original form or after being incorporated into other items, without first obtaining approval from the U.S. Government or as otherwise authorized by U.S. law and regulations. Products labeled with "AL" unequal "N" are subject to European/national export authorization.

The export indications can be viewed in advance in the description of the respective goods on the Industry Mall, our online catalog system. Only the export labels "AL" and "ECCN" indicated on order confirmations, delivery notes and invoices are authoritative.

Products without label, with label "AL:N"/"ECCN:N", or label "AL:9X9999"/"ECCN: 9X9999" may require authorization from responsible authorities depending on the final end-use, or the destination.

If you transfer goods (hardware and/or software and/or technology as well as corresponding documentation, regardless of the mode of provision) delivered by us or works and services (including all kinds of technical support) performed by us to a third party worldwide, you shall comply with all applicable national and international (re-)export control regulations. In any event of such transfer of goods, works and services you shall comply with the (re-) export control regulations of the Federal Republic of Germany, of the European Union and of the United States of America.

Prior to any transfer of goods, works and services provided by us to a third party you shall in particular check and guarantee by appropriate measures that

- there will be no infringement of an embargo imposed by the European Union, by the United States of America and/ or by the United Nations by such transfer, by brokering of contracts concerning those goods, works and services or by provision of other economic resources in connection with those goods, works and services, also considering the limitations of domestic business and prohibitions of by-passing those embargoes;
- such goods, works and services are not intended for use in connection with armaments, nuclear technology or weapons, if and to the extent such use is subject to prohibition or authorization, unless required authorization is provided;
- the regulations of all applicable Sanctioned Party Lists of the European Union and the United States of America concerning the trading with entities, persons and organizations listed therein are considered.

If required to enable authorities or us to conduct export control checks, you, upon request by us, shall promptly provide us with all information pertaining to the particular end customer, the particular destination and the particular intended use of goods, works and services provided by us, as well as any export control restrictions existing.

You acknowledge that under the EU embargo regulations against Iran, Syria and Russia respectively the sale of certain listed goods and related services is subject to authorization by the competent export control authorities of the European Union. If (i) the goods or services ordered by you are destined for Iran, Syria or Russia, and (ii) the contract for our supplies and/or services is subject to prior authorization of the competent export control authorities of the European Union, the contract between you and us shall come into force in this respect only upon granting of such authorization.

The products listed in this catalog may be subject to European/German and/or US export regulations. Any export requiring approval is therefore subject to authorization by the relevant authorities.

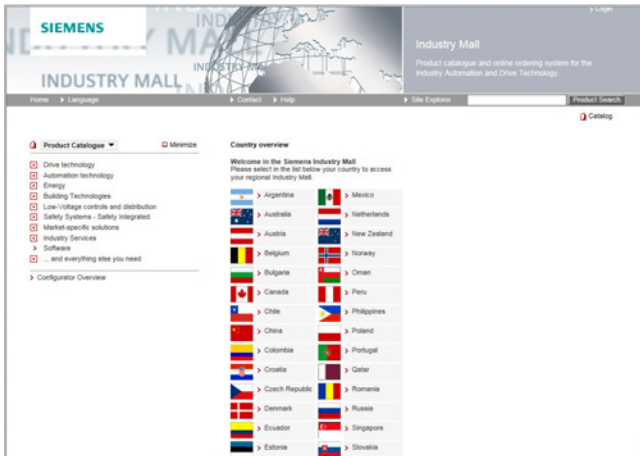
Errors excepted and subject to change without prior notice.

Appendix

Notes

Selection and ordering at Siemens Industry Mall, downloading and ordering catalogs

Easy product selection and ordering: Industry Mall



Industry Mall

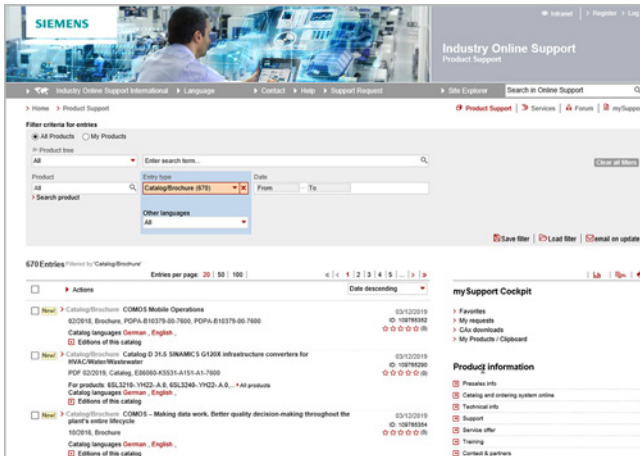
The Industry Mall is a Siemens AG Internet ordering platform. It provides you with online access to a comprehensive product spectrum that is presented in an informative, well-organized way.

Powerful search functions help you select the required products, while configurators enable you to configure complex product and system components quickly and easily. CAx data are also available for you to use.

Data transfer allows the entire procedure, from selection through ordering to tracking and tracing, to be carried out online. Availability checks, individual customer discounting, and quotation preparation are also possible.

www.siemens.com/industrymall

Downloading catalogs



Siemens Industry Online Support

You can download catalogs and brochures in PDF format from Siemens Industry Online Support without having to register.

The filter box makes it possible to perform targeted searches.

www.siemens.com/industry-catalogs

Ordering printed catalogs



Please contact your local Siemens branch if you are interested in ordering printed catalogs.

Addresses can be found at

www.siemens.com/automation-contact

Get more information

www.siemens.com/sirius

Published by
Siemens AG

Smart Infrastructure
Electrical Products
Siemensstraße 10
93055 Regensburg, Germany

For the U.S. published by
Siemens Industry Inc.

100 Technology Drive
Alpharetta, GA 30005
United States

PDF (E86060-K1010-A101-B5-7600)
KG 0123 1434 En
Produced in Germany
© Siemens 2023

Security information

Siemens provides products and solutions with industrial security functions that support the secure operation of plants, systems, machines and networks.

In order to protect plants, systems, machines and networks against cyber threats, it is necessary to implement – and continuously maintain – a holistic, state-of-the-art industrial security concept. Siemens' products and solutions constitute one element of such a concept.

Customers are responsible for preventing unauthorized access to their plants, systems, machines and networks. Such systems, machines and components should only be connected to an enterprise network or the internet if and to the extent such a connection is necessary and only when appropriate security measures (e.g. firewalls and/or network segmentation) are in place.

For additional information on industrial security measures that may be implemented, please visit <https://www.siemens.com/industrialsecurity>.

Siemens' products and solutions undergo continuous development to make them more secure. Siemens strongly recommends that product updates are applied as soon as they are available and that the latest product versions are used. Use of product versions that are no longer supported, and failure to apply the latest updates may increase customer's exposure to cyber threats.

To stay informed about product updates, subscribe to the Siemens Industrial Security RSS Feed under <https://www.siemens.com/cert>.

Subject to changes and errors. The information given in this document only contains general descriptions and/or performance features which may not always specifically reflect those described, or which may undergo modification in the course of further development of the products. The requested performance features are binding only when they are expressly agreed upon in the concluded contract.

All product designations may be trademarks or other rights of Siemens AG, its affiliated companies or other companies whose use by third parties for their own purposes could violate the rights of the respective owner.